



International Trade Point



**Ministry of Foreign Trade
&
Industry**

Monthly Foreign Trade Statistics Report February 2007



June 2007



Ministry of Trade & Industry

EITP



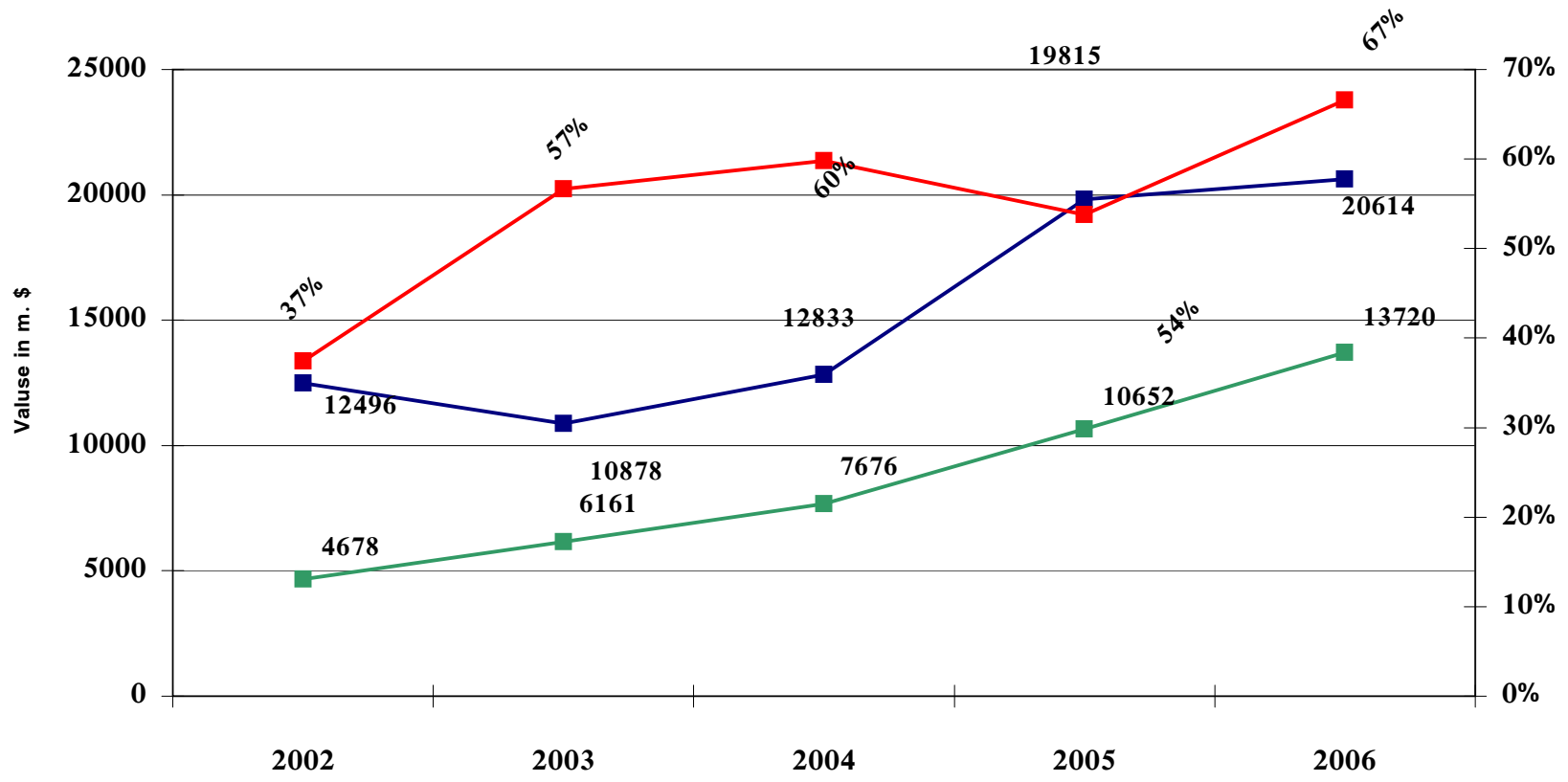
Total Egyptian Exports & Imports
2002–2006

Value: million US\$	2002	2003	2004	2005	2006
Total Exports	4678	6161	7676	10652	13720
		(32)	(25)	(39)	(29)
Total Imports	12496	10878	12833	19815	20614
		(-13)	(18)	(54)	(4)
Trade Balance	-7818	-4717	-5157	-9163	-6894
		(-40)	(9)	(78)	(-25)
% Exports / Imports	37%	57%	60%	54%	67%

() percent change over previous year

Source: CAPMAS – Data is treated and classified by EITP

Total Egyptian Exports & Imports



■ Total Exports
 ■ Total Imports
 ■ % Exports / Imports



Main Items for Commodity Exports & Imports

Value: million US\$	Jan- Feb		Jul/Feb	
	2006	2007	2005/2006	2006/2007
Trade Balance	-960	-1477	-4990	-5626
Total Exports	2197	2500	8360	9299
Domestic Exports	1936	1973.1	7183	7881
Petroleum Exports	1187	1095	4577	4671
Crude Oil	138	110	440	569
Non Petroleum Exports	749	878	2606	3210
Raw Cotton	36	28	84	78
Raw Materials	94	84	291	302
Semi Industrial Commodity	205	246	768	1015
Industrial Commodity	414	521	1463	1815
Free Zone Exports	261	527	1177	1418
Total Imports	3157	3977	13350	14924
Petroleum Imports	334	413	1244	1613
Non Petroleum Imports	2401	3045	10321	11220
Raw Materials	543	638	2082	2264
Intermediate Commodity	1072	1461	4803	5286
Investment Commodity	344	383	1432	1436
Consumption Commodity	442	564	2003	2234
Durable Consumption Commodity	105	122	504	468
Non Durable Consumption Commodity	337	442	1500	1767
Free Zone Imports	422	519	1785	2091
Trade Volume	5354	6477	21710	24223

Source: CAPMAS - Data is treated and classified by EITP

() percent change over previous year

Main items for exports & imports
Classified by Degree of Processing & Usage

Value in M.\$

Detail	2002	2003	2004	2005	2006
Trade Balance	-7818	-4717	-5157	-9163	-6894
		(40)	(-9)	(-78)	(25)
Total Exports	4678	6161	7676	10652	13720
		(32)	(25)	(39)	(29)
National Exports	4247	5776	7222	9463	12116
		(36)	(25)	(31)	(28)
Fuel Exports	1527	2443	3094	5226	7403
		(60)	(27)	(69)	(42)
Crude Oil	315	341	403	515	884
		(8)	(18)	(28)	(72)
Other products	1211	2101	2692	4711	6519
		(73)	(28)	(75)	(38)
Non-oil Exports	2720	3333	4127	4237	4713
		(23)	(24)	(3)	(11)
Raw Cotton	330	373	482	179	132
		(13)	(29)	(-63)	(-26)
Raw Material	273	312	494	525	534
		(14)	(58)	(6)	(2)
Semi-manufactured Goods	584	1070	1061	1254	1415
		(83)	(-1)	(18)	(13)
Finished Goods	1533	1578	2090	2278	2631
		(3)	(32)	(9)	(15)
Free Zones	432	385	454	1189	1604
		(-11)	(18)	(162)	(35)

() Change percentage %

Source : C.A.P.M.A.S

Main items for exports & imports
Classified by Degree of Processing & Usage

Value in M.\$

Detail	2002	2003	2004	2005	2006
Total Imports	12496	10878	12833	19815	20614
		(-13)	(18)	(54)	(4)
Fuel Imports	439	523	1025	1786	2235
		(19)	(96)	(74)	(25)
Non-oil Imports	10825	8836	10345	15514	15451
		(-18)	(17)	(50)	(0)
Raw Materials	1845	1493	1642	3090	3155
		(-19)	(10)	(88)	(2)
Intermediate Goods	4844	4206	5051	7405	7223
		(-13)	(20)	(47)	(-2)
Investment Goods	1616	1276	1491	2081	2019
		(-21)	(17)	(40)	(-3)
Durable Goods	395	312	338	667	709
		(-21)	(9)	(97)	(6)
Non-durable Goods	2124	1549	1822	2272	2345
		(-27)	(18)	(25)	(3)
Free Zones Imports	1232	1519	1463	2515	2927
		(23)	(-4)	(72)	(16)
Trade Volume	17174	17039	20509	30468	34334
		(-1)	(20)	(49)	(13)

() Change percentage %

Source : C.A.P.M.A.S



**Geographical Distribution for Commodity Exports
(2002– 2006)**

Value: million US\$	2002	2003	2004	2005	2006
EU (25 Members)	1323	2098	2700	3589	4603
Arabian Countries	786	1032	1395	2009	2212
Asia without Arabian Countries	1061	1176	1347	1684	2547
North America	397	537	639	989	1225
Africa without Arabian Countries	77	163	159	212	144
Eastern Europe	55	91	121	139	148
South America	17	28	35	30	17
Other	970	1036	1280	2000	2823
Total	4685	6161	7676	10652	13720

Source: CAPMAS - Data is treated and classified by EITP

Ministry of Trade & Industry

E.I.T.P



Geographical Distribution for Commodity Imports (2002–2006)

Value: million US\$	2002	2003	2004	2005	2006
EU (25 Members)	3562	3027	3425	4534	4592
Arabian Countries	902	953	1460	3187	3950
Asia without Arabian Countries	2302	1823	2444	3664	3971
North America	1762	1323	1426	1898	1727
Africa without Arabian Countries	261	186	110	160	98
Eastern Europe	874	776	885	1814	1568
South America	706	719	790	1163	984
Other	2127	2072	2293	3395	3724
Total	12496	10878	12833	19815	20614

Source: CAPMAS - Data is treated and classified by EITP

Egyptian Foreign Trade by Geographical Region
Europ union

Value in M.\$

COUNTRY NAME	EXPORTS						IMPORTS						TRADE BALANCE					
	2001	2002	2003	2004	2005	2006	2001	2002	2003	2004	2005	2006	2001	2002	2003	2004	2005	2006
ITALY	379.08	498.70	758.96	981.89	1079.59	1266.26	646.25	629.68	537.01	614.36	830.30	849.42	-267.17	-130.98	221.95	367.54	249.29	416.84
SPAIN	155.99	152.22	288.24	432.06	807.57	1035.78	176.09	153.47	127.44	138.05	241.76	269.76	-20.11	-1.25	160.80	294.02	565.80	766.01
FRANCE	165.30	117.27	167.68	163.04	369.39	798.97	505.90	539.20	449.44	413.37	595.96	621.89	-340.60	-421.94	-281.76	-250.33	-226.57	177.07
UNITED KINGDOM	97.90	77.48	146.65	149.76	178.71	458.65	301.17	311.12	261.29	306.52	358.08	345.45	-203.27	-233.64	-114.65	-156.75	-179.37	113.20
NETHERLANDS	280.47	200.48	229.31	391.80	503.21	395.60	259.62	221.93	177.78	209.86	287.96	343.22	20.85	-21.45	51.53	181.95	215.25	52.38
BELGIUM	41.80	49.97	94.12	107.14	178.92	190.85	199.30	122.92	110.47	144.85	201.06	170.07	-157.51	-72.95	-16.36	-37.71	-22.13	20.77
FEDERAL REP.OF GERMANY	112.15	95.61	120.46	140.00	108.50	152.99	965.89	824.47	714.07	859.20	1026.33	1083.30	-853.74	-728.86	-593.61	-719.20	-917.83	-930.31
GREECE	47.34	79.08	138.95	113.41	122.80	99.40	96.01	62.63	54.28	127.03	101.55	104.22	-48.67	16.46	84.68	-13.62	21.25	-4.82
CYPRUS	4.05	5.65	16.98	39.55	46.24	57.18	9.09	8.80	9.54	5.61	14.42	20.90	-5.04	-3.15	7.44	33.94	31.82	36.28
PORTUGAL	16.12	21.01	47.04	35.01	17.68	32.13	12.90	10.09	10.97	7.26	17.75	9.25	3.22	10.92	36.07	27.75	-0.07	22.88
MALTA	19.42	7.31	37.56	87.14	116.14	26.83	11.86	2.49	0.47	1.82	1.47	20.67	7.57	4.82	37.09	85.32	114.67	6.15
SWEDEN	3.14	2.00	18.97	2.16	10.52	21.37	193.94	148.15	130.85	149.21	258.33	191.78	-190.80	-146.15	-111.88	-147.05	-247.80	-170.41
REPUBLIC OF SLOVENIA	6.55	5.58	8.18	12.09	12.66	13.34	67.42	85.25	39.83	29.26	92.79	68.68	-60.87	-79.67	-31.65	-17.17	-80.13	-55.34
POLAND	1.06	3.08	2.39	4.97	3.70	11.61	40.38	47.37	44.12	38.08	43.25	59.23	-39.33	-44.29	-41.73	-33.11	-39.55	-47.62
IRISH FREE STATE	5.79	4.56	7.97	13.67	8.91	11.10	78.89	46.83	34.77	55.22	40.54	50.34	-73.10	-42.27	-26.80	-41.55	-31.63	-39.23
AUSTRIA	2.32	1.69	2.35	2.77	3.31	11.01	43.28	30.39	40.03	46.77	58.23	56.72	-40.96	-28.70	-37.68	-44.00	-54.91	-45.71
DENMARK	2.53	3.17	4.41	14.36	5.96	6.17	140.65	73.51	54.87	56.64	67.25	46.44	-138.13	-70.34	-50.46	-42.28	-61.29	-40.26
HUNGARY	2.84	2.34	1.45	2.67	5.04	5.64	16.88	29.52	23.13	16.77	18.63	25.64	-14.04	-27.18	-21.68	-14.11	-13.59	-20.00
FINLAND	0.78	0.76	0.90	0.68	4.04	3.63	152.50	164.62	97.38	116.62	174.65	192.95	-151.72	-163.86	-96.48	-115.94	-170.60	-189.32
REPUBLIC OF LATVIA	0.11	0.37	0.76	1.36	2.22	1.86	8.94	1.40	1.89	6.15	3.06	0.48	-8.83	-1.03	-1.13	-4.80	-0.84	1.39
CZECH REPUBLIC	2.76	2.84	3.63	3.15	2.25	1.18	28.55	21.52	84.15	60.78	81.73	53.54	-25.79	-18.69	-80.52	-57.63	-79.48	-52.36
TOTAL	1347.50	1331.2	2096.96	2698.7	3587.36	4601.55	3955.5	3535.4	3003.78	3403.43	4515.10	4583.95	-2608.04	-2204.20	-906.83	-704.73	-927.71	17.59

Egyptian Foreign Trade by Geographical Region
Europ union

Value in M.\$

COUNTRY NAME	EXPORTS						IMPORTS						TRADE BALANCE					
	2001	2002	2003	2004	2005	2006	2001	2002	2003	2004	2005	2006	2001	2002	2003	2004	2005	2006
SLOVAK REPUBLIC	0.58	0.97	1.34	1.10	0.57	0.56	2.69	5.26	4.11	13.04	8.63	2.89	-2.11	-4.29	-2.78	-11.94	-8.07	-2.33
REPUBLIC OF ESTONIA	0.18	0.00	0.10	0.14	0.06	0.37	11.12	19.85	18.30	6.14	5.95	4.26	-10.95	-19.85	-18.19	-5.99	-5.89	-3.89
REPUBLIC OF LITHUANIA	0.19	0.25	0.26	0.38	1.00	0.35	1.31	0.94	0.91	2.06	3.85	0.79	-1.12	-0.68	-0.64	-1.68	-2.86	-0.44
LUXEMBOURG	0.73	0.05	0.29	0.13	0.10	0.04	0.18	0.08	0.15	0.16	0.23	0.13	0.56	-0.03	0.14	-0.03	-0.13	-0.09
TOTAL	1349.18	1332.4	2098.95	2700.4	3589.09	4602.87	3970.8	3561.5	3027.25	3424.83	4533.76	4592.02	-2621.66	-2229.05	-928.30	-724.37	-944.66	10.84

Egyptian Foreign Trade by Geographical Region
Arab countries

Value in M.\$

COUNTRY NAME	EXPORTS						IMPORTS						TRADE BALANCE					
	2001	2002	2003	2004	2005	2006	2001	2002	2003	2004	2005	2006	2001	2002	2003	2004	2005	2006
SAUDI-ARABIA	147.00	142.32	183.53	220.84	381.40	318.39	686.17	344.36	257.71	495.83	957.67	1425.31	-539.17	-202.04	-74.17	-274.99	-576.27	-1106.92
UNITED ARAB EMIRATES	59.30	91.69	115.14	125.51	305.76	302.69	113.72	67.82	83.43	76.57	137.17	131.43	-54.41	23.87	31.71	48.93	168.60	171.26
SYRIA	55.91	60.40	73.76	196.71	207.44	255.65	48.98	37.56	74.28	101.17	146.50	190.18	6.93	22.84	-0.52	95.54	60.93	65.47
JORDAN	25.20	96.63	95.11	156.98	196.35	249.25	21.20	26.78	29.94	28.10	72.56	85.27	4.00	69.85	65.18	128.88	123.79	163.98
LEBANON	53.28	73.72	103.63	202.50	174.01	204.03	23.46	23.58	30.14	31.26	65.97	73.65	29.83	50.14	73.48	171.24	108.05	130.38
SUDAN	33.72	35.35	79.61	99.04	185.32	194.61	63.78	56.60	48.82	70.24	64.63	60.31	-30.06	-21.26	30.79	28.79	120.69	134.30
LIBYA	44.81	69.82	109.20	70.92	149.75	168.64	39.63	43.09	40.35	44.14	119.35	102.73	5.18	26.73	68.85	26.78	30.41	65.91
YEMEN	18.02	31.81	27.77	38.52	88.47	122.91	8.66	12.08	11.45	6.70	24.33	43.35	9.36	19.73	16.31	31.81	64.14	79.56
MOROCCO	25.92	30.90	83.49	42.60	85.93	84.75	20.71	8.13	9.38	8.03	10.97	14.00	5.22	22.76	74.11	34.57	74.96	70.76
PALASTINE	5.67	7.36	11.31	21.14	27.61	82.70	0.15	0.18	4.15	0.00	0.04	0.07	5.52	7.18	7.16	21.13	27.57	82.64
KUWAIT	16.80	19.81	19.98	23.81	39.04	64.73	50.85	39.33	24.73	36.90	843.60	1083.96	-34.05	-19.51	-4.75	-13.09	-804.57	-1019.23
IRAQ	89.79	66.99	52.72	52.94	55.92	46.61	0.99	0.90	0.10	0.76	2.03	1.97	88.79	66.09	52.61	52.18	53.89	44.64
ALGERIA	11.90	23.39	42.20	91.96	31.32	36.80	3.53	206.76	311.89	533.31	694.52	601.67	8.37	-183.38	-269.69	-441.35	-663.20	-564.86
TUNISIA	21.99	17.55	18.93	18.93	39.50	35.56	15.51	12.15	9.79	6.80	12.36	30.18	6.48	5.40	9.14	12.13	27.13	5.39
QATAR	4.56	5.74	5.26	8.80	11.29	23.66	11.97	4.45	5.48	8.67	10.82	8.69	-7.41	1.28	-0.22	0.13	0.47	14.98
OMAN	4.22	4.80	3.25	5.58	7.07	7.81	4.31	3.15	1.76	1.50	1.08	0.99	-0.09	1.65	1.48	4.09	5.99	6.83
BAHREIN	2.33	2.52	2.60	3.03	5.51	7.04	14.67	1.33	1.66	1.99	9.42	81.79	-12.35	1.19	0.95	1.04	-3.90	-74.75
DJIBOUTI	1.46	1.66	3.55	8.19	8.35	4.23	0.59	7.32	4.03	0.98	1.31	7.23	0.87	-5.66	-0.48	7.21	7.04	-3.00
MAURITANIA	1.41	0.58	0.65	6.74	8.06	1.79	2.32	4.03	3.67	6.45	12.62	7.39	-0.90	-3.45	-3.02	0.29	-4.56	-5.61
SOMALIA	0.10	2.92	0.21	0.45	0.58	0.43	0.46	2.17	0.69	0.95	0.11	0.05	-0.36	0.75	-0.48	-0.50	0.47	0.39
COMOROS (ISLANDS)	0.00	0.00	0.00	0.16	0.01	0.00	0.00	0.01	0.00	0.00	0.00	0.00	0.00	-0.01	0.00	0.16	0.01	0.00
OTHER ARABIAN	0.00	0.00	0.00	0.00	0.00	0.00	0.00	0.00	0.00	0.00	0.00	0.00	0.00	0.00	0.00	0.00	0.00	0.00
TOTAL	623.39	785.96	1031.90	1395.4	2008.69	2212.28	1131.7	901.78	953.45	1460.35	3187.06	3950.22	-508.25	-115.85	78.44	-65.03	-1178.36	-1737.88



Egyptian Foreign Trade by Geographical Region
Arab countries

Value in M.\$

COUNTRY NAME	EXPORTS						IMPORTS						TRADE BALANCE					
	2001	2002	2003	2004	2005	2006	2001	2002	2003	2004	2005	2006	2001	2002	2003	2004	2005	2006
COUNTRIES																		
TOTAL	623.39	785.96	1031.90	1395.4	2008.69	2212.28	1131.7	901.78	953.45	1460.35	3187.06	3950.22	-508.25	-115.85	78.44	-65.03	-1178.36	-1737.88



Egyptian Foreign Trade by Geographical Region
North amrica

Value in M.\$

COUNTRY NAME	EXPORTS						IMPORTS						TRADE BALANCE					
	2001	2002	2003	2004	2005	2006	2001	2002	2003	2004	2005	2006	2001	2002	2003	2004	2005	2006
U.S.A	346.49	386.73	527.44	585.91	958.14	1189.43	1829.16	1684.29	1270.31	1350.57	1769.18	1603.95	-1482.68	-1297.56	-742.86	-764.65	-811.04	-414.52
MEXICO	0.27	0.24	0.68	1.22	6.62	24.89	15.60	10.82	14.35	10.21	24.16	20.29	-15.33	-10.58	-13.67	-8.99	-17.54	4.60
CANADA	10.28	9.65	9.38	51.47	23.83	10.97	114.33	67.44	38.67	64.81	104.75	103.21	-104.05	-57.78	-29.30	-13.34	-80.92	-92.24
TOTAL	357.04	396.62	537.50	638.60	988.59	1225.29	1959.1	1762.6	1323.33	1425.59	1898.09	1727.45	-1602.06	-1365.92	-785.83	-786.98	-909.50	-502.16

Source : C.A.P.M.A.S

Egyptian Foreign Trade by Geographical Region
Asia Without arab countries

Value in M.\$

COUNTRY NAME	EXPORTS						IMPORTS						TRADE BALANCE					
	2001	2002	2003	2004	2005	2006	2001	2002	2003	2004	2005	2006	2001	2002	2003	2004	2005	2006
INDIA	254.23	411.74	466.69	381.26	528.09	1391.96	283.72	365.48	146.73	182.49	294.57	354.95	-29.49	46.25	319.96	198.77	233.52	1037.01
TURKEY	76.65	77.85	141.50	235.28	334.21	362.64	244.10	222.74	172.79	246.11	623.26	390.46	-167.45	-144.89	-31.29	-10.83	-289.05	-27.82
SOUTH KORIA	50.01	48.66	97.71	188.93	138.15	228.38	269.36	209.05	190.77	230.16	320.87	263.53	-219.36	-160.39	-93.06	-41.24	-182.72	-35.16
JAPAN	64.76	70.87	98.11	57.68	121.85	223.21	367.78	333.28	270.90	343.18	464.66	547.40	-303.02	-262.41	-172.79	-285.50	-342.81	-324.18
CHINA PEOPLE'S REPUBLIC	40.24	221.35	99.58	121.67	109.17	108.27	513.29	560.07	534.70	660.84	914.96	1196.27	-473.05	-338.72	-435.12	-539.17	-805.79	-1088.00
SINGAPORE	86.30	60.49	49.89	135.51	247.27	53.18	40.14	32.48	22.45	21.54	33.25	96.37	46.16	28.00	27.44	113.97	214.02	-43.19
PAKISTAN	20.75	42.85	47.10	69.40	64.14	49.90	10.14	10.70	11.72	9.63	11.83	10.95	10.61	32.15	35.38	59.77	52.32	38.95
TAIWAN	8.30	11.88	63.21	12.89	33.25	46.42	126.08	113.64	121.21	105.01	144.46	134.83	-117.78	-101.76	-58.01	-92.12	-111.21	-88.41
INDONESIA	9.34	15.58	37.68	20.53	18.99	24.00	158.53	132.81	108.11	161.17	182.80	340.22	-149.19	-117.23	-70.43	-140.64	-163.81	-316.21
ISRAEL	192.26	45.69	12.29	10.63	17.15	19.84	18.80	9.32	6.55	10.11	14.59	50.56	173.46	36.37	5.74	0.52	2.56	-30.72
MALAYSIA	9.51	11.26	13.67	10.50	13.63	9.11	111.70	130.31	72.93	261.17	349.34	232.95	-102.19	-119.06	-59.26	-250.67	-335.71	-223.84
HONG KONG	8.37	17.46	8.36	19.25	15.65	5.96	42.46	46.95	26.12	27.73	62.17	41.28	-34.09	-29.48	-17.76	-8.47	-46.53	-35.32
OTHER COUNTRIES	0.00	0.04	0.17	4.05	5.02	5.38	0.00	0.00	0.39	1.53	13.87	56.62	0.00	0.04	-0.22	2.52	-8.85	-51.24
AFGHANISTAN	0.01	0.08	0.14	4.21	3.99	5.38	1.20	1.69	0.21	0.24	3.05	2.14	-1.18	-1.61	-0.07	3.97	0.94	3.24
THAILAND	8.92	15.61	21.23	53.74	14.61	3.60	106.55	89.36	92.98	125.31	174.15	210.31	-97.63	-73.75	-71.75	-71.56	-159.55	-206.70
BANGLADESH	0.21	2.82	5.07	4.90	4.16	3.10	4.19	4.58	1.77	2.31	2.57	5.14	-3.98	-1.76	3.30	2.60	1.59	-2.05
SRILANKA	0.61	0.66	1.01	0.58	3.03	2.66	9.44	8.06	7.73	8.49	10.76	7.64	-8.83	-7.40	-6.72	-7.91	-7.73	-4.98
IRAN	4.32	4.84	10.24	1.25	1.28	2.09	10.51	12.40	5.78	9.98	11.90	8.84	-6.18	-7.56	4.46	-8.72	-10.62	-6.75
NORTH VIETNAM	0.54	0.23	0.54	1.12	0.63	0.85	7.71	7.46	8.42	8.64	12.75	10.35	-7.17	-7.23	-7.88	-7.52	-12.12	-9.51
PHILIPPINES	0.40	0.94	1.15	10.03	7.16	0.62	2.17	4.62	1.94	4.64	3.61	2.78	-1.77	-3.67	-0.78	5.39	3.55	-2.16
MYANMAR	0.02	0.02	0.07	0.00	0.05	0.36	0.86	5.71	2.06	2.04	0.36	3.76	-0.84	-5.69	-1.99	-2.04	-0.31	-3.40
BRONWAY	0.01	0.03	0.01	0.09	0.66	0.25	0.11	0.13	0.80	0.00	0.33	0.01	-0.10	-0.11	-0.79	0.09	0.32	0.24
TOTAL	835.76	1061.0	1175.42	1343.5	1682.14	2547.16	2328.8	2300.8	1807.06	2422.32	3650.11	3967.36	-1493.07	-1239.91	-631.64	-1078.79	-1967.99	-1420.20

Egyptian Foreign Trade by Geographical Region
Asia Without arab countries

Value in M.\$

COUNTRY NAME	EXPORTS						IMPORTS						TRADE BALANCE					
	2001	2002	2003	2004	2005	2006	2001	2002	2003	2004	2005	2006	2001	2002	2003	2004	2005	2006
BURMA	0.00	0.00	0.00	0.00	0.03	0.07	1.62	0.00	0.00	1.78	3.66	1.00	-1.62	0.00	0.00	-1.78	-3.63	-0.92
KAMBODIA (KAMPUCHEA)	0.00	0.01	0.01	0.77	1.60	0.07	0.08	0.22	0.69	0.38	0.13	0.04	-0.08	-0.21	-0.68	0.39	1.46	0.03
NEPAL	0.05	0.00	0.31	0.05	0.05	0.04	0.02	0.03	0.00	0.28	0.09	0.16	0.03	-0.03	0.31	-0.23	-0.04	-0.11
LAOS	0.00	0.00	0.00	0.01	0.00	0.04	0.14	0.27	0.04	0.16	0.00	0.26	-0.14	-0.27	-0.04	-0.15	0.00	-0.22
MACAO	0.00	0.00	0.00	2.72	0.02	0.00	0.07	0.03	0.17	0.06	0.06	0.21	-0.07	-0.03	-0.17	2.66	-0.04	-0.20
BHUTAN	0.00	0.00	0.00	0.00	0.00	0.00	0.00	0.00	0.00	0.02	0.00	0.00	0.00	0.00	0.00	-0.02	0.00	0.00
NORTH KORIA	0.00	0.00	0.00	0.02	0.00	0.00	1.30	0.57	14.60	19.13	9.49	2.15	-1.30	-0.57	-14.60	-19.11	-9.49	-2.15
MONGOLIA	0.00	0.00	0.00	0.00	0.02	0.00	0.33	0.10	0.08	0.00	0.08	0.02	-0.32	-0.10	-0.08	0.00	-0.06	-0.02
SOUTH VIETNAM	0.00	0.00	0.00	0.00	0.00	0.00	0.00	0.00	0.00	0.00	0.00	0.00	0.00	0.00	0.00	0.00	0.00	0.00
CHINA	0.02	0.00	0.00	0.00	0.00	0.00	0.00	0.00	0.00	0.00	0.00	0.00	0.02	0.00	0.00	0.00	0.00	0.00
TOTAL	835.83	1061.0	1175.74	1347.1	1683.86	2547.38	2332.4	2302.1	1822.64	2444.13	3663.62	3971.20	-1496.55	-1241.12	-646.90	-1097.03	-1979.79	-1423.79

Egyptian Foreign Trade by Geographical Region
Africa Without arab countries

Value in M.\$

COUNTRY NAME	EXPORTS						IMPORTS						TRADE BALANCE					
	2001	2002	2003	2004	2005	2006	2001	2002	2003	2004	2005	2006	2001	2002	2003	2004	2005	2006
KENYA	20.16	14.69	22.90	32.28	49.93	45.59	94.87	138.66	61.47	2.44	3.96	2.07	-74.71	-123.97	-38.57	29.85	45.97	43.52
SENEGAL	4.54	8.20	6.98	8.21	16.09	18.94	0.00	0.00	0.00	0.00	0.06	0.05	4.54	8.20	6.98	8.21	16.04	18.89
ETHIOPIA	2.51	4.31	4.16	6.61	19.80	10.91	3.89	8.65	3.24	5.56	12.34	22.59	-1.38	-4.34	0.92	1.05	7.46	-11.68
SOUTH AFRICA REPUPLIC	4.73	4.71	28.18	16.22	14.66	8.92	18.67	9.85	22.94	7.68	14.86	14.06	-13.94	-5.14	5.24	8.55	-0.20	-5.13
FEDERAL OF NIGERIA	6.92	7.42	36.66	30.74	18.37	7.70	0.49	0.48	0.07	0.10	0.61	0.11	6.42	6.94	36.59	30.65	17.76	7.59
TANZANIA	3.90	2.28	3.35	3.66	7.30	7.11	3.21	3.57	5.81	5.20	6.35	2.81	0.68	-1.29	-2.46	-1.54	0.95	4.30
SAN DENIS AND MORAIS (FRENCH ISLAND)	5.25	2.43	3.74	4.80	5.61	5.50	0.11	0.03	0.00	0.28	0.00	0.04	5.15	2.40	3.74	4.52	5.61	5.46
GHANA	3.84	7.05	18.41	17.17	4.77	4.47	0.84	1.69	2.93	4.59	4.88	3.21	3.00	5.36	15.48	12.58	-0.11	1.25
MADAGASCAR	1.41	1.12	4.17	2.52	3.37	4.29	0.25	0.08	0.54	0.56	0.43	0.14	1.16	1.04	3.63	1.96	2.93	4.14
UGANDA	0.87	1.00	1.01	1.30	2.76	3.83	2.55	0.82	0.73	1.31	1.46	1.03	-1.68	0.18	0.28	-0.01	1.31	2.81
OTHER COUNTRIES	0.00	0.01	0.05	0.14	0.89	2.84	0.00	0.00	2.36	0.01	0.00	0.00	0.00	0.01	-2.31	0.13	0.89	2.84
CAMEROON	2.63	7.31	3.86	2.87	5.13	2.77	0.25	0.37	0.60	0.20	0.31	0.25	2.38	6.94	3.26	2.66	4.81	2.52
ANGOLA & CABINDA	0.57	3.18	2.50	4.65	3.79	2.64	0.00	0.01	0.29	1.34	0.00	0.05	0.57	3.18	2.20	3.31	3.79	2.59
LIBERIA	0.10	0.18	1.01	1.55	3.67	2.37	0.00	0.33	0.03	0.07	1.40	4.79	0.10	-0.15	0.98	1.47	2.27	-2.43
GUINEA	2.53	2.11	5.11	3.86	2.16	2.34	0.00	0.05	0.01	0.00	0.00	1.13	2.53	2.07	5.11	3.86	2.16	1.21
COTE DIVOIRE	4.65	2.17	4.20	9.21	34.17	2.08	0.22	0.60	0.74	0.68	1.02	0.46	4.43	1.57	3.47	8.52	33.15	1.62
Congo, Dem. Rep.	1.51	0.28	0.25	0.23	0.48	1.56	0.00	0.02	0.00	0.17	0.06	0.00	1.51	0.26	0.25	0.05	0.42	1.56
SIERRA LEONE	2.08	0.72	1.75	1.08	1.30	1.07	0.03	0.00	0.00	0.00	0.00	0.04	2.06	0.72	1.75	1.08	1.30	1.02
SWAZIAND	0.00	0.00	0.03	0.53	0.41	0.87	0.02	1.79	0.00	0.01	0.39	0.00	-0.02	-1.79	0.03	0.52	0.02	0.87
GAMBIA	1.26	0.61	0.56	1.12	1.21	0.86	0.00	0.00	0.00	0.00	0.00	0.00	1.26	0.61	0.56	1.12	1.21	0.86
MOZAMBIQUE	0.74	0.01	0.23	1.09	0.54	0.85	1.49	0.73	7.79	0.00	0.01	0.00	-0.74	-0.72	-7.56	1.09	0.53	0.85
TOTAL	70.20	69.79	149.11	149.84	196.41	137.51	126.89	167.73	109.55	30.20	48.14	52.83	-56.68	-97.92	39.57	119.63	148.27	84.66

Egyptian Foreign Trade by Geographical Region
Africa Without arab countries

Value in M.\$

COUNTRY NAME	EXPORTS						IMPORTS						TRADE BALANCE						
	2001	2002	2003	2004	2005	2006	2001	2002	2003	2004	2005	2006	2001	2002	2003	2004	2005	2006	
(PORTUGESE)																			
ZAMBIA	0.72	0.64	4.03	1.06	1.46	0.75	43.53	42.47	34.60	47.66	62.62	23.52	-42.81	-41.82	-30.57	-46.60	-61.16	-22.77	
ERTREA	0.43	0.77	1.15	1.06	2.46	0.75	0.00	0.00	0.03	1.05	0.05	0.00	0.42	0.77	1.12	0.01	2.41	0.74	
NEIGER	0.12	0.03	0.06	0.07	2.24	0.70	0.00	0.00	0.00	0.00	0.00	0.00	0.12	0.03	0.06	0.07	2.24	0.70	
MALAWI	0.01	0.28	0.79	0.68	1.55	0.62	25.18	33.93	31.24	21.26	24.29	17.85	-25.18	-33.65	-30.45	-20.58	-22.74	-17.23	
CHAD	0.11	0.09	0.57	0.36	0.47	0.56	0.17	0.24	0.18	0.12	0.06	0.00	-0.07	-0.15	0.39	0.24	0.41	0.56	
Burkina Faso	0.15	0.45	0.36	0.17	2.39	0.51	0.00	0.05	0.04	0.30	0.02	0.05	0.15	0.40	0.32	-0.13	2.36	0.46	
بنين	0.24	1.11	1.79	1.10	0.60	0.50	0.01	0.00	0.00	0.00	0.23	0.21	0.23	1.11	1.79	1.10	0.37	0.29	
GABON	0.32	0.28	0.28	0.49	0.65	0.44	0.00	0.00	0.01	0.07	0.00	0.05	0.32	0.28	0.27	0.41	0.65	0.39	
TOGO	0.19	1.35	1.77	2.13	0.25	0.32	2.35	4.81	4.75	5.52	16.73	1.96	-2.15	-3.46	-2.98	-3.39	-16.48	-1.64	
MALI	0.64	0.91	1.15	0.40	0.43	0.29	0.56	0.00	0.00	0.00	0.00	0.00	0.08	0.91	1.15	0.40	0.43	0.29	
ZEMBABWE	0.53	0.24	0.26	0.65	0.94	0.28	1.62	9.78	5.16	3.03	2.56	1.63	-1.08	-9.54	-4.89	-2.38	-1.62	-1.35	
RWANDA REPUBLIC	0.06	0.16	0.60	0.59	0.50	0.25	0.00	0.00	0.00	0.00	5.26	0.00	0.06	0.15	0.60	0.59	-4.75	0.25	
CENTRAL AFRICA REPULBIC	0.02	0.00	0.01	0.05	0.20	0.24	0.02	0.02	0.00	0.03	0.01	0.00	0.00	-0.02	0.01	0.02	0.20	0.24	
CONGO BRAZAFEL	0.08	0.46	0.19	0.39	1.10	0.23	0.15	0.20	0.02	0.18	0.00	0.06	-0.07	0.25	0.17	0.21	1.10	0.18	
SOUTH WESTERN AFRICA	0.01	0.03	0.08	0.06	0.34	0.20	0.00	0.00	0.00	0.00	0.00	0.00	0.01	0.03	0.07	0.06	0.34	0.20	
BURUNDI	0.14	0.16	0.11	0.05	0.22	0.11	0.00	0.00	0.00	0.00	0.00	0.00	0.14	0.16	0.11	0.05	0.22	0.11	
PRINCIBE (PORTUGESE ISLNAD)	0.00	0.00	0.01	0.00	0.00	0.08	0.01	0.00	0.00	0.00	0.00	0.00	-0.01	0.00	0.01	0.00	0.00	0.08	
BOTSWANA	0.04	0.03	0.00	0.01	0.00	0.03	0.00	0.05	0.00	0.07	0.00	0.00	0.04	-0.02	0.00	-0.06	0.00	0.03	
SEYCHELLES (ISLANDE)	0.00	0.01	0.02	0.00	0.07	0.02	0.00	0.00	0.00	0.07	0.00	0.00	0.00	0.01	0.02	-0.07	0.07	0.02	
TOTAL	74.01	76.79	162.34	159.16	212.28	144.39	200.49	259.28	185.58	109.56	159.97	98.16	-126.48	-182.48	-23.23	49.58	52.32	46.21	

Egyptian Foreign Trade by Geographical Region
Africa Without arab countries

Value in M.\$

COUNTRY NAME	EXPORTS						IMPORTS						TRADE BALANCE					
	2001	2002	2003	2004	2005	2006	2001	2002	2003	2004	2005	2006	2001	2002	2003	2004	2005	2006
GUINEA BESAW	0.00	0.00	0.28	0.30	0.13	0.01	0.00	0.00	0.00	0.00	0.00	0.00	0.00	0.00	0.28	0.30	0.13	0.01
ST. HILANA (ISLANDS)	0.00	0.00	0.00	0.00	0.00	0.00	0.00	0.00	0.00	0.00	0.00	0.00	0.00	0.00	0.00	0.00	0.00	0.00
CAPE VEDE (PORTUGEGE ISLANDS)	0.00	0.00	0.00	0.00	0.01	0.00	0.00	0.00	0.00	0.00	0.00	0.00	0.00	0.00	0.00	0.00	0.01	0.00
CANARY (SPANISH ISLANDS)	0.00	0.00	0.00	0.00	0.00	0.00	0.00	0.00	0.00	0.00	0.00	0.00	0.00	0.00	0.00	0.00	0.00	0.00
LESOTHO	0.00	0.00	0.00	0.00	0.01	0.00	0.04	0.01	0.00	0.00	0.00	0.00	-0.04	-0.01	0.00	0.00	0.01	0.00
MADERA (PORTUGESE ISLAND)	0.00	0.00	0.00	0.00	0.00	0.00	0.00	0.00	0.00	0.00	0.00	0.00	0.00	0.00	0.00	0.00	0.00	0.00
FERNANDO POO (SPANISH ISLAND)	0.00	0.11	0.00	0.00	0.00	0.00	0.00	1.55	0.00	0.00	0.00	0.00	0.00	-1.44	0.00	0.00	0.00	0.00
SOCOTRA (BRITISH ISLAND)	0.00	0.00	0.00	0.00	0.00	0.00	0.04	0.00	0.00	0.00	0.00	0.00	-0.04	0.00	0.00	0.00	0.00	0.00
SAO_TOME (PORTUGESE ISLAND)	0.00	0.00	0.00	0.00	0.00	0.00	0.00	0.00	0.00	0.00	0.00	0.00	0.00	0.00	0.00	0.00	0.00	0.00
BENIN	0.00	0.00	0.00	0.00	0.00	0.00	0.00	0.00	0.00	0.00	0.00	0.00	0.00	0.00	0.00	0.00	0.00	0.00
RIO DE ORE (SPANISH SAHARA)	0.00	0.00	0.00	0.00	0.01	0.00	0.00	0.00	0.00	0.00	0.00	0.00	0.00	0.00	0.00	0.00	0.01	0.00
MAURITIUS	0.00	0.00	0.00	0.00	0.00	0.00	0.00	0.00	0.00	0.00	0.00	0.00	0.00	0.00	0.00	0.00	0.00	0.00
TOTAL	74.01	76.90	162.62	159.46	212.44	144.40	200.57	260.84	185.58	109.56	159.97	98.16	-126.56	-183.93	-22.95	49.88	52.48	46.22

Egyptian Foreign Trade by Geographical Region
East Europ

Value in M.\$

COUNTRY NAME	EXPORTS						IMPORTS						TRADE BALANCE					
	2001	2002	2003	2004	2005	2006	2001	2002	2003	2004	2005	2006	2001	2002	2003	2004	2005	2006
RUSSIAN FEDERATION	8.17	11.41	31.07	31.32	44.66	53.21	291.89	428.44	373.46	367.52	827.77	777.80	-283.72	-417.03	-342.39	-336.20	-783.11	-724.58
ROMANIA	23.75	21.31	19.63	27.00	32.42	39.30	132.00	108.24	102.55	144.13	184.88	159.91	-108.25	-86.93	-82.92	-117.14	-152.46	-120.61
REPUBLIC OF UKRANIA	10.13	6.20	7.65	20.23	32.84	23.38	211.72	241.66	216.98	293.75	689.51	499.18	-201.59	-235.46	-209.33	-273.51	-656.67	-475.80
REPUBLIC OF CROATIA	4.40	3.37	3.05	2.89	3.34	8.23	35.14	30.87	27.82	22.69	35.68	49.52	-30.74	-27.50	-24.77	-19.80	-32.35	-41.29
BULGARIA	4.89	3.41	7.88	8.51	7.51	6.95	18.53	32.41	28.55	23.68	40.89	36.88	-13.64	-29.01	-20.67	-15.17	-33.38	-29.93
ALBANIA	1.39	2.58	7.49	6.32	6.98	6.94	8.06	3.84	3.59	2.93	2.01	2.68	-6.67	-1.27	3.90	3.39	4.98	4.26
REPUBLIC OF GEORGIA	0.25	0.55	0.26	0.67	1.55	2.47	0.24	0.00	0.00	0.03	0.02	0.07	0.01	0.55	0.26	0.64	1.54	2.40
KAZAKHSTAN	0.65	0.62	0.69	0.58	1.85	2.06	6.09	1.73	2.80	1.64	2.26	8.59	-5.44	-1.10	-2.11	-1.06	-0.41	-6.53
OTHER COUNTRIES IN EAST EUROP	0.00	0.00	0.00	0.00	0.13	1.78	0.00	0.01	0.00	0.01	0.00	1.00	0.00	-0.01	0.00	-0.01	0.13	0.78
REPUBLIC OF TAJIKISTAN	0.16	0.00	0.00	0.00	1.81	0.97	0.04	0.02	0.00	0.04	0.02	0.07	0.12	-0.02	0.00	-0.04	1.78	0.90
ARMENIA	0.75	0.03	0.06	0.04	0.13	0.65	0.03	0.00	0.01	0.45	0.13	0.03	0.72	0.03	0.05	-0.41	0.00	0.63
REPUBLIC OF MOLDOVA	0.18	0.73	0.24	0.09	0.32	0.56	0.00	0.00	0.38	0.23	0.70	0.42	0.17	0.73	-0.15	-0.14	-0.38	0.14
REPUBLIC OF AZERBAIJAN	0.72	0.75	0.35	0.64	3.28	0.45	0.19	0.34	0.03	2.21	1.68	0.08	0.53	0.42	0.32	-1.57	1.59	0.37
REPUBLIC OF BOSNIA & HERZEGOVINA	0.43	0.19	0.28	0.39	0.51	0.41	13.08	7.30	4.65	15.24	5.13	4.69	-12.65	-7.11	-4.37	-14.85	-4.62	-4.28
REPUBLIC OF BELARUS	1.18	1.60	12.34	21.86	0.04	0.41	1.25	1.83	7.54	1.25	3.51	16.25	-0.08	-0.23	4.81	20.61	-3.48	-15.84
REPUBLIC OF SERBIA	0.00	0.01	0.03	0.13	0.31	0.33	1.55	0.28	0.29	0.96	4.21	3.28	-1.55	-0.27	-0.26	-0.82	-3.91	-2.95
REPUBLIC OF	0.00	0.00	0.08	0.02	0.06	0.10	0.08	0.44	0.00	0.15	0.38	0.19	-0.08	-0.44	0.08	-0.13	-0.32	-0.09
TOTAL	57.05	52.76	91.10	120.69	137.74	148.20	719.89	857.41	768.65	876.91	1798.78	1560.64	-662.86	-804.65	-677.55	-756.21	-1661.07	-1412.42

Egyptian Foreign Trade by Geographical Region
East Europ

Value in M.\$

COUNTRY NAME	EXPORTS						IMPORTS						TRADE BALANCE					
	2001	2002	2003	2004	2005	2006	2001	2002	2003	2004	2005	2006	2001	2002	2003	2004	2005	2006
MONTENEGRO																		
YOGOSLAVIA	0.85	0.10	0.28	0.01	1.51	0.10	1.11	6.56	0.62	0.39	2.33	2.63	-0.26	-6.46	-0.34	-0.39	-0.82	-2.53
REPUBLIC OF UZBEKISTAN	0.06	0.05	0.01	0.11	0.04	0.03	0.04	0.04	0.22	0.11	0.00	0.00	0.01	0.00	-0.21	0.01	0.04	0.02
REPUBLIC OF MACEDONIA	0.07	1.45	0.01	0.08	0.02	0.01	10.35	10.01	6.02	7.14	12.72	3.91	-10.27	-8.56	-6.01	-7.06	-12.70	-3.90
REPUBLIC OF TURKMENISTAN	0.00	0.00	0.00	0.00	0.00	0.00	0.00	0.00	0.00	0.00	0.00	0.68	0.00	0.00	0.00	0.00	0.00	-0.68
REPUBLIC OF KYRGYZSTAN	0.17	0.17	0.00	0.00	0.00	0.00	0.00	0.06	0.00	0.48	0.22	0.32	0.17	0.11	0.00	-0.48	-0.22	-0.32
CZECHOSLOVAKIA	0.00	0.00	0.00	0.00	0.00	0.00	0.00	0.00	0.00	0.00	0.00	0.00	0.00	0.00	0.00	0.00	0.00	0.00
GERMANY	0.00	0.00	0.00	0.00	0.00	0.00	0.00	0.00	0.00	0.00	0.00	0.00	0.00	0.00	0.00	0.00	0.00	0.00
TOTAL	58.20	54.53	91.40	120.89	139.31	148.34	731.39	874.08	775.51	885.03	1814.05	1568.18	-673.21	-819.56	-684.11	-764.13	-1674.77	-1419.83

Egyptian Foreign Trade by Geographical Region
Latin amrica

Value in M.\$

COUNTRY NAME	EXPORTS						IMPORTS						TRADE BALANCE					
	2001	2002	2003	2004	2005	2006	2001	2002	2003	2004	2005	2006	2001	2002	2003	2004	2005	2006
BRAZIL	26.05	14.27	12.84	15.11	21.12	38.18	247.84	364.42	370.35	414.26	578.64	768.09	-221.79	-350.15	-357.51	-399.15	-557.52	-729.92
PUERTO RICO(U.S.A)	1.29	0.07	0.00	0.47	0.04	5.28	0.00	0.00	0.00	0.05	0.06	0.00	1.29	0.07	0.00	0.42	-0.02	5.28
ARGENTINA	0.89	0.62	2.30	1.36	4.47	3.83	260.09	303.85	332.41	320.66	501.65	179.97	-259.20	-303.23	-330.11	-319.31	-497.18	-176.14
VENEZUELA	0.61	0.46	0.40	0.40	0.83	1.14	2.93	0.84	0.06	23.52	19.91	0.06	-2.32	-0.38	0.33	-23.12	-19.07	1.08
COLOMBIA	0.42	0.51	1.67	0.47	1.05	0.92	0.20	0.06	2.50	0.38	0.25	1.64	0.22	0.45	-0.83	0.08	0.80	-0.72
URUGUAY	6.31	0.06	0.12	0.29	0.18	0.89	3.62	11.76	6.43	21.90	37.63	21.15	2.69	-11.71	-6.31	-21.61	-37.45	-20.26
OTHER COUNTRIES	0.00	0.00	0.00	0.03	0.10	0.20	0.00	0.00	0.00	0.00	0.00	0.13	0.00	0.00	0.00	0.03	0.10	0.07
CUBA	0.10	0.13	0.53	0.12	0.31	0.16	0.23	0.65	0.00	0.02	0.19	0.00	-0.14	-0.52	0.53	0.10	0.12	0.16
DOMINCA	0.01	0.00	0.27	1.00	0.19	0.16	0.11	0.01	0.00	0.02	0.00	0.00	-0.10	-0.01	0.27	0.98	0.19	0.16
JAMAICA	0.00	0.00	3.92	0.01	0.01	0.13	0.00	0.00	0.05	0.05	0.00	0.00	0.00	0.00	3.86	-0.03	0.01	0.12
ECUADOR	0.05	0.12	0.18	0.08	0.09	0.12	1.94	1.04	0.60	1.15	1.35	4.10	-1.90	-0.91	-0.42	-1.07	-1.26	-3.98
CHILLE	0.07	0.17	0.14	0.14	0.26	0.09	8.98	6.02	2.46	2.97	4.90	3.57	-8.91	-5.85	-2.32	-2.83	-4.65	-3.48
EL SALVADOR	0.03	0.19	0.98	0.15	0.01	0.08	0.00	0.07	0.00	0.00	0.00	0.12	0.03	0.12	0.98	0.15	0.01	-0.04
PANAMA	0.06	0.14	0.41	0.13	0.48	0.07	0.01	0.00	0.02	0.05	0.16	0.00	0.05	0.14	0.39	0.08	0.32	0.07
DOMINICAN REP.	0.00	0.00	0.34	0.70	1.05	0.04	0.00	0.00	0.00	0.02	0.00	0.00	0.00	0.00	0.34	0.67	1.05	0.04
PERU	0.09	0.00	0.69	0.40	0.03	0.03	1.00	1.15	0.39	0.76	2.38	1.75	-0.92	-1.15	0.30	-0.36	-2.35	-1.72
PARAGUAY	0.02	0.03	0.03	0.04	0.02	0.03	0.38	1.37	1.06	0.14	4.05	2.60	-0.36	-1.35	-1.04	-0.10	-4.03	-2.57
GUATEMALA	0.11	0.10	0.08	0.03	0.13	0.02	1.06	2.06	0.32	0.79	7.72	0.41	-0.95	-1.96	-0.24	-0.77	-7.58	-0.39
COSTARICA	0.06	0.10	1.12	0.87	0.00	0.02	0.02	0.00	0.01	0.01	0.00	0.00	0.03	0.10	1.11	0.86	0.00	0.02
BOLIVIA	0.00	0.00	0.00	0.03	0.01	0.01	0.76	1.39	0.59	0.33	0.35	0.24	-0.76	-1.39	-0.59	-0.30	-0.33	-0.22
BERBADOS	0.00	0.01	0.00	0.02	0.00	0.01	0.00	0.00	0.00	0.00	0.00	0.00	0.00	0.01	0.00	0.02	0.00	0.01
HONDURAS	0.00	0.01	0.00	0.00	0.00	0.01	0.16	0.00	0.00	0.00	0.00	0.00	-0.16	0.01	0.00	0.00	0.00	0.01
OTHER COUNTRIES	0.01	0.00	1.47	0.27	0.00	0.01	0.00	0.00	1.45	2.29	3.62	0.01	0.01	0.00	0.03	-2.02	-3.62	0.00
TOTAL	36.18	16.99	27.49	22.12	30.38	51.43	529.33	694.69	718.70	789.37	1162.86	983.84	-493.19	-677.71	-691.23	-767.28	-1132.46	-932.42

Source : C.A.P.M.A.S

Egyptian Foreign Trade by Geographical Region
Latin amrica

Value in M.\$

COUNTRY NAME	EXPORTS						IMPORTS						TRADE BALANCE					
	2001	2002	2003	2004	2005	2006	2001	2002	2003	2004	2005	2006	2001	2002	2003	2004	2005	2006
FRENCH GUIANA	0.01	0.00	0.03	0.00	0.01	0.00	0.00	0.00	0.01	0.00	0.00	0.00	0.01	0.00	0.02	0.00	0.01	0.00
TRINIDAD - TOBAGO	0.12	0.05	0.06	12.55	0.00	0.00	0.00	0.00	0.00	0.00	0.00	0.01	0.12	0.05	0.06	12.55	0.00	-0.01
DEUTCH GUIANA (SURINAM)	0.00	0.00	0.00	0.01	0.01	0.00	0.00	0.00	0.00	0.00	0.00	0.00	0.00	0.00	0.00	0.01	0.01	0.00
GUIANA	0.03	0.04	0.06	0.02	0.02	0.00	0.00	0.27	0.00	0.00	0.00	0.00	0.03	-0.23	0.06	0.02	0.02	0.00
FALKLAND (ISLANDS)	0.00	0.00	0.00	0.00	0.00	0.00	0.00	0.00	0.00	0.00	0.00	0.00	0.00	0.00	0.00	0.00	0.00	0.00
BAHAMA	0.00	0.00	0.01	0.03	0.00	0.00	0.00	0.00	0.00	0.00	0.00	0.00	0.00	0.00	0.01	0.03	0.00	0.00
VIRGIN (BRITISH)	0.00	0.00	0.00	0.00	0.00	0.00	0.00	0.00	0.00	0.00	0.00	0.00	0.00	0.00	0.00	0.00	0.00	0.00
BRITISH HONDURAS	0.00	0.00	0.00	0.00	0.00	0.00	0.00	0.00	0.00	0.00	0.00	0.00	0.00	0.00	0.00	0.00	0.00	0.00
MARTINIQUE (FRENCH)	0.09	0.01	0.04	0.01	0.00	0.00	0.00	0.00	0.00	0.00	0.00	0.00	0.09	0.01	0.04	0.01	0.00	0.00
VIRGIN (U.S.A. ISLANDS)	0.00	0.00	0.00	0.00	0.00	0.00	0.00	0.00	0.00	0.00	0.00	0.00	0.00	0.00	0.00	0.00	0.00	0.00
GUADELOUPE (FRENCH)	0.21	0.02	0.03	0.00	0.00	0.00	0.00	0.00	0.00	0.00	0.00	0.00	0.21	0.02	0.03	0.00	0.00	0.00
WINDWARD (BRITISH ISLANDS)	0.00	0.00	0.00	0.00	0.00	0.00	0.00	0.00	0.00	0.00	0.00	0.00	0.00	0.00	0.00	0.00	0.00	0.00
QURACAO	0.00	0.00	0.00	0.00	0.00	0.00	0.00	0.00	0.00	0.00	0.00	0.00	0.00	0.00	0.00	0.00	0.00	0.00
ANTILLES ISLANDS(INCLUDE BANATRE&ORUBA	0.01	0.00	0.00	0.00	0.00	0.00	0.00	0.00	0.00	0.00	0.00	0.00	0.01	0.00	0.00	0.00	0.00	0.00
BERMUDAS	0.00	0.00	0.00	0.00	0.00	0.00	0.00	0.00	0.00	0.00	0.00	0.00	0.00	0.00	0.00	0.00	0.00	0.00
MONTSERRAT	0.00	0.00	0.00	0.00	0.00	0.00	0.00	0.00	0.00	0.00	0.00	0.00	0.00	0.00	0.00	0.00	0.00	0.00
ST. KITTS NEVIS	0.00	0.00	0.00	0.00	0.00	0.00	0.00	0.00	0.00	0.00	0.00	0.00	0.00	0.00	0.00	0.00	0.00	0.00
ST. LUCIA	0.00	0.00	0.00	0.00	0.00	0.00	0.00	0.00	0.00	0.01	0.00	0.00	0.00	0.00	0.00	0.00	-0.01	0.00
TOTAL	36.65	17.11	27.72	34.74	30.42	51.43	529.33	694.96	718.71	789.37	1162.87	983.85	-492.72	-677.86	-691.01	-754.66	-1132.43	-932.43

Egyptian Foreign Trade by Geographical Region
Latin amrica

Value in M.\$

COUNTRY NAME	EXPORTS						IMPORTS						TRADE BALANCE						
	2001	2002	2003	2004	2005	2006	2001	2002	2003	2004	2005	2006	2001	2002	2003	2004	2005	2006	
ST. VINCENT	0.00	0.00	0.00	0.00	0.00	0.00	0.00	0.06	0.00	0.00	0.00	0.00	0.00	-0.06	0.00	0.00	0.00	0.00	0.00
GRENADA	0.00	0.00	0.00	0.00	0.00	0.00	0.00	0.00	0.00	0.00	0.00	0.00	0.00	0.00	0.00	0.00	0.00	0.00	0.00
ANTGAWA	0.00	0.00	0.00	0.00	0.00	0.00	0.00	0.02	0.00	0.14	0.00	0.00	0.00	-0.02	0.00	-0.14	0.00	0.00	0.00
NICARAGUA	0.00	0.00	0.00	0.00	0.01	0.00	0.00	0.00	0.00	0.00	0.00	0.19	0.00	0.00	0.00	0.00	0.01	-0.19	0.00
HAITI	0.00	0.02	0.05	0.06	0.02	0.00	0.00	0.00	0.00	0.00	0.00	0.00	0.00	0.02	0.05	0.06	0.02	0.00	0.00
TOTAL	36.65	17.13	27.77	34.80	30.45	51.43	529.33	695.04	718.71	789.51	1162.87	984.04	-492.72	-677.92	-690.96	-754.74	-1132.40	-932.62	

Main items for exports & imports
Classified by Degree of Processing & Usage

Value in M.\$

Detail	FEB. 2006	MAR. 2006	APR. 2006	MAY 2006	JUN. 2006	JUL. 2006	AUG. 2006	SEP. 2006	OCT. 2006	NOV. 2006	DEC. 2006	JAN. 2007	FEB. 2007
Trade Balance	-325	-451	-270	-467	-597	-755	****	-388	-747	-415	-743	-978	-498
	(-39)	(40)	(-73)	(-28)	(-26)	(-46)	(65)	(-93)	(39)	(-79)	(-32)	(49)	
Total Exports	1215	1219	1236	1217	1053	1167	1035	1051	1057	1261	1227	1107	1393
	(0)	(1)	(-2)	(-13)	(11)	(-11)	(1)	(1)	(19)	(-3)	(-10)	(26)	
National Exports	1050	1110	1126	1062	975	1061	923	951	927	1011	1036	959	1014
	(6)	(1)	(-6)	(-8)	(9)	(-13)	(3)	(-3)	(9)	(3)	(-7)	(6)	
Fuel Exports	576	675	665	676	624	583	597	609	604	560	623	487	608
	(17)	(-1)	(2)	(-8)	(-7)	(2)	(2)	(-1)	(-7)	(11)	(-22)	(25)	
Crude Oil	66	46	80	83	77	79	117	77	62	62	62	43	68
	(-29)	(73)	(4)	(-7)	(2)	(49)	(-34)	(-19)	(-1)	(0)	(-31)	(59)	
Other products	510	629	585	592	547	504	479	532	542	498	561	444	540
	(23)	(-7)	(1)	(-8)	(-8)	(-5)	(11)	(2)	(-8)	(13)	(-21)	(22)	
Non-oil Exports	474	435	461	386	350	477	327	342	323	450	413	472	406
	(-8)	(6)	(-16)	(-9)	(36)	(-32)	(5)	(-6)	(40)	(-8)	(14)	(-14)	
Raw Cotton	19	14	10	12	10	7	8	5	5	9	16	12	15
	(-26)	(-29)	(14)	(-14)	(-34)	(28)	(-35)	(-3)	(72)	(73)	(-21)	(21)	
Raw Material	58	79	55	42	46	51	41	36	29	33	28	40	44
	(35)	(-30)	(-23)	(10)	(11)	(-20)	(-13)	(-20)	(13)	(-14)	(41)	(10)	
Semi-manufactured Goods	139	100	132	127	82	183	113	116	54	132	171	145	101
	(-28)	(32)	(-4)	(-35)	(122)	(-38)	(3)	(-53)	(143)	(30)	(-15)	(-30)	
Finished Goods	258	242	264	205	212	237	164	184	234	277	198	275	246
	(-6)	(9)	(-22)	(3)	(12)	(-31)	(12)	(27)	(18)	(-29)	(39)	(-11)	
Free Zones	166	109	110	155	78	107	112	100	130	251	191	148	379

Main items for exports & imports

Percentage of total

Value in M.\$

Detail	FEB. 2006	MAR. 2006	APR. 2006	MAY 2006	JUN. 2006	JUL. 2006	AUG. 2006	SEP. 2006	OCT. 2006	NOV. 2006	DEC. 2006	JAN. 2007	FEB. 2007
Total Exports	100	100	100	100	100	100	100	100	100	100	100	100	100
National Exports	70	83	90	90	86	91	91	87	93	91	89	90	88
Feul Exports	47	52	61	62	47	55	54	56	59	50	58	58	57
Crude Oil	4	4	4	7	5	4	6	7	7	7	11	7	6
Other products	43	47	57	55	42	52	47	49	52	43	46	51	51
Non-oil Exports	23	31	29	28	39	36	37	32	33	41	32	33	31
Raw Cotton	0	1	1	2	2	1	1	1	1	1	1	1	1
Raw Material	2	3	3	4	5	6	4	3	4	4	4	3	3
Semi-manufactured Goods	5	9	8	7	11	8	11	10	8	16	11	11	5
Finished Goods	15	18	16	16	21	20	21	17	20	20	16	18	22
Free Zones	30	17	10	10	14	9	9	13	7	9	11	10	12
Total Imports	100	100	100	100	100	100	100	100	100	100	100	100	100
Fuel Imports	13	12	8	10	12	11	9	11	11	15	11	12	11
Non-oil Imports	69	76	80	77	75	74	77	75	73	74	72	75	71
Raw Materials	13	16	12	18	17	16	16	14	15	14	14	17	15
Intermediate Goods	32	37	35	34	34	35	36	36	36	38	33	32	33
Investment Goods	9	9	18	12	10	9	10	10	9	9	10	10	7
Durable Goods	4	3	4	3	4	3	4	4	5	3	3	4	3
Non-durable Goods	12	11	11	10	11	11	10	12	9	9	13	12	13
Free Zones Imports	18	12	12	13	13	14	14	13	15	11	17	13	18

Exports Classified by Commodity Groups

Value in M.\$

Group Code	Group Name	FEB. 2006	MAR. 2006	APR. 2006	MAY 2006	JUN. 2006	JUL. 2006	AUG. 2006	SEP. 2006	OCT. 2006	NOV. 2006	DEC. 2006	JAN. 2007	FEB. 2007
05	METAL PRODUCTS .	628.85 (51.75)	729.81 (59.86)	710.52 (57.49)	719.50 (59.13)	682.44 (64.81)	665.38 (57.00)	660.69 (63.81)	664.67 (63.25)	649.76 (61.49)	603.77 (47.88)	713.70 (58.16)	560.29 (50.60)	675.74 (48.51)
21	MASTERPEICES ,COLLECTION SETS AND ANTIQUES .	165.74 (13.64)	108.98 (8.94)	109.81 (8.88)	155.34 (12.77)	78.30 (7.44)	106.84 (9.15)	112.34 (10.85)	100.04 (9.52)	129.85 (12.29)	250.67 (19.88)	191.20 (15.58)	148.34 (13.40)	378.66 (27.19)
15	ORDINARY METALS AND MANUFACTURES .	80.04 (6.59)	66.44 (5.45)	97.94 (7.92)	67.20 (5.52)	110.60 (10.50)	124.70 (10.68)	57.19 (5.52)	76.25 (7.26)	121.71 (11.52)	166.99 (13.24)	81.38 (6.63)	153.99 (13.91)	87.14 (6.26)
02	VEGETABLES PRODUCTS .	88.37 (7.27)	109.53 (8.98)	82.08 (6.64)	57.71 (4.74)	50.20 (4.77)	59.23 (5.07)	40.68 (3.93)	29.81 (2.84)	34.33 (3.25)	56.61 (4.49)	54.48 (4.44)	75.62 (6.83)	76.99 (5.53)
11	TEXTILES,AND TEXTILE MANUFACTURES .	54.73 (4.50)	49.14 (4.03)	56.43 (4.57)	49.02 (4.03)	40.74 (3.87)	47.05 (4.03)	39.09 (3.78)	38.93 (3.70)	32.08 (3.04)	47.57 (3.77)	43.48 (3.54)	42.00 (3.79)	44.55 (3.20)
07	RATINGATES AND ARTIFICIAL PLASTICS ,CELLULOUSE CITRATE .	32.07 (2.64)	28.89 (2.37)	43.65 (3.53)	34.52 (2.84)	18.44 (1.75)	14.81 (1.27)	41.28 (3.99)	39.02 (3.71)	16.44 (1.56)	51.85 (4.11)	49.36 (4.02)	41.24 (3.72)	33.12 (2.38)
04	FOOD MANUFACTURING PRODUCTS,BEVERAGES,ALCOHOLS AND VENEGAR .	12.12 (1.00)	15.61 (1.28)	23.70 (1.92)	22.51 (1.85)	13.11 (1.25)	20.31 (1.74)	13.74 (1.33)	10.83 (1.03)	10.25 (0.97)	6.86 (0.54)	8.92 (0.73)	8.99 (0.81)	32.75 (2.35)
06	CHEMICAL INDUSTRIES PRODUCTS AND RELATED INDUSTRIES .	40.95 (3.37)	50.30 (4.13)	27.46 (2.22)	29.44 (2.42)	22.63 (2.15)	21.65 (1.85)	24.82 (2.40)	22.57 (2.15)	26.49 (2.51)	31.85 (2.53)	30.38 (2.48)	24.89 (2.25)	22.80 (1.64)
20	OTHER MANUFACTURED CATEGORIES NOT MENTIONED OR LISTED BEFORE .	2.72 (0.22)	7.56 (0.62)	10.94 (0.88)	7.10 (0.58)	7.86 (0.75)	6.58 (0.56)	7.02 (0.68)	9.90 (0.94)	5.30 (0.50)	5.59 (0.44)	10.05 (0.82)	19.20 (1.73)	13.88 (1.00)

Exports Classified by Commodity Groups

Value in M.\$

Group Code	Group Name	FEB. 2006	MAR. 2006	APR. 2006	MAY 2006	JUN. 2006	JUL. 2006	AUG. 2006	SEP. 2006	OCT. 2006	NOV. 2006	DEC. 2006	JAN. 2007	FEB. 2007
13	INDUSTRIES MADE OF STONE OR GYPSUM OR CEMENT OR ROCK SILK .	22.73 (1.87)	11.96 (0.98)	13.87 (1.12)	10.23 (0.84)	10.35 (0.98)	14.24 (1.22)	11.82 (1.14)	13.66 (1.30)	10.00 (0.95)	13.73 (1.09)	10.42 (0.85)	16.61 (1.50)	12.72 (0.91)
01	LIVESTOCK ANIMAL PRODUCTS .	5.61 (0.46)	4.85 (0.40)	5.56 (0.45)	4.26 (0.35)	2.98 (0.28)	2.62 (0.22)	3.34 (0.32)	4.57 (0.43)	2.65 (0.25)	4.82 (0.38)	3.10 (0.25)	2.64 (0.24)	3.94 (0.28)
08	MANUFACTURED LEATHER AND FUR .	1.21 (0.10)	1.71 (0.14)	1.04 (0.08)	2.57 (0.21)	4.32 (0.41)	1.57 (0.13)	3.35 (0.32)	3.48 (0.33)	5.23 (0.50)	2.16 (0.17)	2.00 (0.16)	2.59 (0.23)	3.57 (0.26)
16	MACHINERY AND APPLIANCES,ELECTRICAL EQUIPMENTS AND THEIR PARTS .	7.81 (0.64)	3.99 (0.33)	3.13 (0.25)	14.64 (1.20)	3.96 (0.38)	7.43 (0.64)	7.41 (0.72)	5.73 (0.54)	6.37 (0.60)	5.88 (0.47)	3.18 (0.26)	2.57 (0.23)	2.48 (0.18)
10	MATERIALS USED IN PAPER INDUSTRY,CARTON,CARTON MANUFACTURES .	4.95 (0.41)	4.87 (0.40)	4.35 (0.35)	3.78 (0.31)	3.01 (0.29)	4.49 (0.38)	3.77 (0.36)	3.17 (0.30)	3.43 (0.32)	5.15 (0.41)	3.70 (0.30)	2.45 (0.22)	2.10 (0.15)
09	WOOD, WOOD COOL,WOODEN MANUFACTURES,CARK AND CARK MANUFACTURES .	0.98 (0.08)	1.19 (0.10)	1.13 (0.09)	0.77 (0.06)	0.42 (0.04)	2.35 (0.20)	1.21 (0.12)	0.93 (0.09)	0.70 (0.07)	1.99 (0.16)	0.62 (0.05)	0.89 (0.08)	0.72 (0.05)
03	FATS,GREASE,OILS(ANIMAL&VEGETABLE)DISSOLVENTS,PREPARED EDIBLE GREASEWA	1.70 (0.14)	0.69 (0.06)	1.25 (0.10)	1.84 (0.15)	0.73 (0.07)	2.96 (0.25)	1.62 (0.16)	0.73 (0.07)	0.40 (0.04)	0.84 (0.07)	1.79 (0.15)	0.46 (0.04)	0.56 (0.04)
17	TRANSPORTATION EQUIPMENTS .	1.16 (0.10)	8.07 (0.66)	0.42 (0.03)	0.27 (0.02)	0.15 (0.01)	0.21 (0.02)	0.52 (0.05)	0.41 (0.04)	1.27 (0.12)	2.48 (0.20)	0.24 (0.02)	0.20 (0.02)	0.51 (0.04)
18	ARTICLES AND APPLIANCES FOR OPTIANCES FOR	0.05 (0.00)	0.38 (0.03)	0.78 (0.06)	0.27 (0.02)	0.17 (0.02)	0.28 (0.02)	0.15 (0.01)	0.27 (0.03)	0.11 (0.01)	0.38 (0.03)	0.18 (0.01)	0.24 (0.02)	0.35 (0.03)

Exports Classified by Commodity Groups

Value in M.\$

Group Code	Group Name	FEB. 2006	MAR. 2006	APR. 2006	MAY 2006	JUN. 2006	JUL. 2006	AUG. 2006	SEP. 2006	OCT. 2006	NOV. 2006	DEC. 2006	JAN. 2007	FEB. 2007
	OPTICS,PHOTOGRAPHY,CINEMA													
12	SHOES,HEAD DRESSES,UMBRELLAS,WHIPS AND THEIR PARTS .	0.08 (0.01)	0.06 (0.01)	0.01 (0.00)	0.02 (0.00)	0.15 (0.01)	0.09 (0.01)	0.06 (0.01)	0.11 (0.01)	0.07 (0.01)	0.04 (0.00)	0.07 (0.01)	0.10 (0.01)	0.17 (0.01)
14	PEARL,PRECIOUS AND SEMI-PRECIOUS STONES,PRECIOUS METALS AND ORDINARY	63.40 (5.22)	15.09 (1.24)	41.92 (3.39)	35.87 (2.95)	2.39 (0.23)	64.60 (5.53)	5.37 (0.52)	25.78 (2.45)	0.18 (0.02)	1.90 (0.15)	18.87 (1.54)	3.91 (0.35)	0.15 (0.01)
19	WEAPONS AND ANMUNATIONS AND THEIR PARTS .	0.00 (0.00)	0.00 (0.00)	0.00 (0.00)	0.00 (0.00)	0.00 (0.00)	0.00 (0.00)	0.00 (0.00)	0.00 (0.00)	0.00 (0.00)	0.00 (0.00)	0.00 (0.00)	0.00 (0.00)	0.00 (0.00)
Total Exports		1215.25	1219.1	1236.0	1216.9	1053.0	1167.4	1035.5	1050.9	1056.6	1261.10	1227.1	1107.2	1392.9

Sorting is according to values of FEB. 2007

Source : C.A.P.M.A.S

Exports Classified by degree of Processing

Value in M.\$

CODE	TITLE	FEB. 2006	MAR. 2006	APR. 2006	MAY 2006	JUN. 2006	JUL. 2006	AUG. 2006	SEP. 2006	OCT. 2006	NOV. 2006	DEC. 2006	JAN. 2007	FEB. 2007
00	Fuel	575.63	674.98	664.87	675.59	624.35	583.13	596.57	609.24	604.14	560.28	623.14	486.63	608.03
		(47.37)	(55.37)	(53.79)	(55.52)	(59.30)	(49.95)	(57.61)	(57.98)	(57.18)	(44.43)	(50.78)	(43.95)	(43.65)
2711110000	GAS,NATURAL,LIQUEFIED	270.46	271.32	251.56	241.74	277.17	197.59	186.01	237.73	258.50	232.79	247.47	207.70	249.43
2710001010	PETROLUUM,PARTIALLY REFIRED INCL.DISTILLED OIL	82.95	149.40	104.78	126.74	129.11	122.61	153.99	113.59	133.02	106.66	128.38	112.23	165.17
2710001030	FUEL,BENZINE TYPE JET FUEL	77.03	96.82	56.46	95.15	75.38	88.28	35.97	78.14	56.08	32.03	51.01	16.16	22.54
2709000010	PETROLEUM, CRUDE	65.66	46.45	80.18	83.26	77.15	78.74	117.31	76.92	62.30	61.91	61.75	42.53	67.84
2710001080	FUEL OIL (MAZOT)	27.95	65.10	66.27	70.81	24.44	49.35	53.84	52.04	46.97	37.94	31.68	45.78	47.06
2710001090	OTHER PRODUCTS FROM OIL	39.58	35.03	42.60	37.53	31.53	33.27	39.93	41.06	33.17	42.47	43.87	39.03	40.20
2704000020	COAL, COKE OF LIGNITE OR PEAT	4.65	1.86	1.61	9.80	0.92	3.35	0.42	1.91	5.84	1.96	2.25	1.44	3.26
2710001060	GAS OIL	6.97	8.13	8.22	8.90	8.14	8.14	7.63	7.47	6.18	6.52	6.83	7.09	5.21
	OTHERS	0.38	0.87	53.19	1.68	0.51	1.82	1.47	0.37	2.07	38.00	49.89	14.66	7.33
09	Free Zones	165.73	108.96	109.80	155.32	78.29	106.83	112.33	100.00	129.83	250.59	191.18	148.34	378.66
		(13.64)	(8.94)	(8.88)	(12.76)	(7.44)	(9.15)	(10.85)	(9.52)	(12.29)	(19.87)	(15.58)	(13.40)	(27.19)
05	Finished Goods	257.59	242.15	264.43	205.08	211.84	236.80	163.93	184.07	234.35	276.77	197.74	275.19	246.15
		(21.20)	(19.86)	(21.39)	(16.85)	(20.12)	(20.28)	(15.83)	(17.52)	(22.18)	(21.95)	(16.11)	(24.85)	(17.67)
7214200000	BARS OF IRON FOR BUILD.CONT.RIBS FROM. OF ROLLED.	29.97	29.98	19.83	23.86	3.63	24.52	10.87	12.86	8.57	71.75	24.16	52.03	21.48
1006300000	RICE, WHETHER OR NOT POLISHED	36.29	39.41	36.72	23.33	17.47	16.55	9.66	4.89	14.18	31.59	30.82	44.23	36.66
7219110000	PROD.OF STEEL HOT ROLLED WIDTH >=600&THICK.>10	17.77	0.38	37.59	9.77	0.53	5.08	0.02	34.30	82.58	3.13	1.09	1.21	22.81
6302910000	LINEN,BED,TABLE & TOLIT OF COTTON,OTHER	7.59	9.44	4.99	8.14	6.46	8.02	6.49	4.69	3.92	5.76	5.33	5.52	6.74
2523291000	CEMENT,PORTLAND OTHER THAN WHITE PACKED	2.94	15.17	10.62	7.66	16.20	21.08	4.05	8.96	12.95	7.73	15.81	11.76	7.74
7221000000	BARS HOT ROLLED IN(COILS).OF STAINNESS STEEL	4.53	4.38	0.57	6.58	6.87	2.22	0.03	3.10	2.55	6.19	2.43	0.00	0.00

Sorting is according to values of FEB. 2007
Source : C.A.P.M.A.S

Exports Classified by degree of Processing

Value in M.\$

CODE	TITLE	FEB. 2006	MAR. 2006	APR. 2006	MAY 2006	JUN. 2006	JUL. 2006	AUG. 2006	SEP. 2006	OCT. 2006	NOV. 2006	DEC. 2006	JAN. 2007	FEB. 2007
9403500000	WOODEN FURNITURE USED IN THE BEDROOMS	2.34	6.46	9.87	6.50	6.15	5.72	5.16	8.83	3.91	4.27	8.09	18.62	11.38
7308200000	TOWERS & LATTICE MAST OF IRON OR STL. OTHERS	1.24 154.91	0.07 136.87	0.16 144.08	6.14 113.11	1.20 153.34	0.00 153.61	3.84 123.83	2.27 104.17	1.27 104.42	0.19 146.16	1.01 109.00	3.98 137.84	1.08 138.3
03	Semi-manufactured Goods	138.83	100.26	131.96	127.15	82.08	182.62	112.85	116.18	54.11	131.64	171.18	144.91	101.18
		(11.42)	(8.22)	(10.68)	(10.45)	(7.80)	(15.64)	(10.90)	(11.06)	(5.12)	(10.44)	(13.95)	(13.09)	(7.26)
7108120000	OTH. UNWROUGHT FROM OF GOLD NON-MONETARY	52.32	15.05	33.75	35.77	2.38	64.57	5.31	25.76	0.18	1.90	18.24	3.66	0.15
3901100010	LIQUIDE & PASTES OF POLYTHYLN A GRAVITY OF <0.94	4.85	15.30	20.83	16.05	5.48	7.66	14.23	15.01	5.38	24.88	20.35	9.45	16.02
1703100090	MOLASSES, UNEDIBLE OF CANE	2.19	4.65	6.78	12.62	1.85	6.89	1.40	0.79	0.38	0.00	0.89	0.86	9.84
2712900000	WAX, OTH. MINERAL & SIMILAR PROD.	5.26	3.54	2.66	9.62	12.47	4.24	7.40	5.34	3.80	7.93	10.32	4.79	4.77
3901901000	POLYMERS OF JOINT ETHLYENE	14.65	0.11	3.63	4.41	4.49	0.00	0.09	0.04	0.00	0.27	0.60	0.24	1.32
2834290090	NITRATES, OTHER	0.00	0.00	0.00	4.07	0.00	0.02	0.03	0.00	5.54	0.00	0.00	0.33	0.00
2523100000	CEMENT CLINKERS	7.10	8.56	5.38	3.56	5.10	11.99	3.59	7.67	6.86	3.72	9.70	11.77	8.15
3404909000	WAXES, ARTIF.& PREPD. WAXES, OTHER OTHERS	3.43 49.03	2.47 50.58	0.17 58.75	3.45 37.58	0.26 50.05	0.66 86.59	0.53 80.28	0.61 60.97	0.11 31.86	3.55 89.40	0.00 111.08	0.31 113.51	0.12 60.82
02	Raw materials	58.18	78.53	54.76	42.17	46.48	51.46	41.40	35.89	28.89	32.71	28.13	39.68	43.82
		(4.79)	(6.44)	(4.43)	(3.47)	(4.41)	(4.41)	(4.00)	(3.42)	(2.73)	(2.59)	(2.29)	(3.58)	(3.15)
0805100010	ORANGES, FRESH	11.42	16.04	7.77	9.91	4.07	3.75	0.79	1.17	0.14	0.45	1.39	7.03	6.67
2515110000	MARBLE & TRAVERTINE, CRUDE	5.58	6.40	7.35	6.58	9.27	9.24	9.34	11.20	7.24	6.17	2.11	9.50	4.91
2510100010	PHOSPHATES OF NATURAL CALCIUM,UNGROUND	2.44	2.27	0.91	3.12	1.86	0.00	1.41	0.00	2.50	0.40	0.07	0.00	0.00
0703100010	ONIONS,FRESH OR CHILLED	2.12	1.88	2.59	3.06	2.84	1.53	2.63	1.35	0.85	0.94	1.05	0.77	1.16
0701900000	POTATOES OTHER	11.07	27.47	14.10	2.20	6.62	0.74	1.00	1.06	0.05	0.01	0.01	1.89	5.93
0708200010	HARICOT,FRESH OR CHILLED	1.04	0.98	0.62	1.23	1.42	1.21	0.51	0.26	0.23	0.60	2.99	0.58	1.17
1211909029	PLANTS,MEDCL.,OTHERS NOT F.R.S.	0.54	0.86	1.00	1.04	1.29	1.81	1.12	1.33	1.25	1.04	0.67	1.33	0.75

Exports Classified by degree of Processing

Value in M.\$

CODE	TITLE	FEB. 2006	MAR. 2006	APR. 2006	MAY 2006	JUN. 2006	JUL. 2006	AUG. 2006	SEP. 2006	OCT. 2006	NOV. 2006	DEC. 2006	JAN. 2007	FEB. 2007
1211909022	LEAVES,BABONG NOT F.R.S.	0.13	0.33	0.84	1.02	0.23	0.85	0.34	0.14	0.20	0.03	0.05	0.10	0.12
	OTHERS	23.84	22.31	19.59	14.01	18.88	32.32	24.27	19.38	16.44	23.06	19.79	18.47	23.12
01	Raw Cotton	19.29	14.24	10.17	11.57	9.91	6.55	8.39	5.48	5.30	9.11	15.75	12.47	15.05
		(1.59)	(1.17)	(0.82)	(0.95)	(0.94)	(0.56)	(0.81)	(0.52)	(0.50)	(0.72)	(1.28)	(1.13)	(1.08)
5201000030	OTHER RAW COTTON, NOT MIXED	14.86	11.40	7.83	10.25	8.61	4.85	6.96	4.25	3.54	8.17	14.71	10.76	13.37
5201000026	RAW COTTON,NOT MIXED GIZA 70	0.93	1.81	1.38	0.98	0.68	1.32	1.01	0.51	0.55	0.85	0.93	1.62	1.02
5201000023	RAW COTTOON,NOT MIXED GIZA 80	1.95	0.79	0.05	0.16	0.16	0.37	0.00	0.28	0.42	0.00	0.07	0.00	0.39
5201000019	RAW COTTON,NOT MIXED,GIZA 85.	0.00	0.00	0.00	0.11	0.00	0.00	0.00	0.09	0.00	0.00	0.00	0.00	0.00
5201000095	EXPORTER MODEL.	0.06	0.16	0.00	0.04	0.25	0.00	0.26	0.19	0.38	0.09	0.04	0.00	0.10
5201000011	RAW COTTON,NOT MIXED GIZA 45	0.17	0.08	0.92	0.02	0.20	0.00	0.17	0.17	0.34	0.00	0.00	0.00	0.08
5201000099	OTHER KINDS OF COTTON N.F.S	1.33	0.00	0.00	0.00	0.00	0.00	0.00	0.00	0.09	0.00	0.00	0.09	0.09
	OTHERS	0.00	0.00	0.00	0.00	0.00	0.00	0.00	0.00	0.00	0.00	0.00	0.00	0.00
Total Exports		1215.25	1219.1	1236.0	1216.9	1053.0	1167.4	1035.5	1050.9	1056.6	1261.10	1227.1	1107.2	1392.9

Sorting is according to values of FEB. 2007

Source : C.A.P.M.A.S

Imports Classified by Commodity Groups

Value in M.\$

Group Code	Group Name	FEB. 2006	MAR. 2006	APR. 2006	MAY 2006	JUN. 2006	JUL. 2006	AUG. 2006	SEP. 2006	OCT. 2006	NOV. 2006	DEC. 2006	JAN. 2007	FEB. 2007
16	MACHINERY AND APPLIANCES,ELECTRECAL EQUIPMENTS AND THEIR PARTS .	234.28 (15.21)	224.74 (13.46)	228.61 (15.18)	216.44 (12.86)	231.63 (14.04)	290.18 (15.10)	330.66 (15.47)	210.27 (14.62)	210.44 (11.67)	242.27 (14.45)	309.92 (15.73)	264.13 (12.67)	312.54 (16.52)
05	METAL PRODUCTS .	297.60 (19.32)	293.62 (17.58)	242.08 (16.08)	284.31 (16.89)	280.14 (16.98)	410.36 (21.35)	361.74 (16.92)	281.44 (19.56)	276.47 (15.33)	254.57 (15.19)	281.26 (14.27)	323.00 (15.49)	296.11 (15.66)
21	MASTERPEICES ,COLLECTION SETS AND ANTIQUES .	206.47 (13.41)	238.05 (14.25)	213.04 (14.15)	226.80 (13.47)	254.87 (15.45)	220.75 (11.49)	358.49 (16.77)	189.24 (13.16)	332.54 (18.44)	212.09 (12.65)	259.25 (13.16)	260.66 (12.50)	258.24 (13.65)
15	ORDINARY METALS AND MANUFACTURES .	91.41 (5.94)	133.91 (8.02)	165.84 (11.01)	156.54 (9.30)	148.61 (9.01)	167.04 (8.69)	164.64 (7.70)	107.12 (7.45)	140.98 (7.82)	127.77 (7.62)	202.27 (10.27)	238.51 (11.44)	196.26 (10.38)
02	VEGETABLES PRODUCTS .	158.37 (10.28)	173.71 (10.40)	138.09 (9.17)	157.23 (9.34)	168.58 (10.22)	160.45 (8.35)	187.39 (8.77)	162.37 (11.29)	184.27 (10.22)	159.54 (9.52)	191.02 (9.69)	291.47 (13.98)	172.87 (9.14)
06	CHEMICAL INDUSTRIES PRODUCTS AND RELATED INDUSTRIES .	115.64 (7.51)	142.10 (8.51)	102.50 (6.81)	129.29 (7.68)	101.98 (6.18)	167.08 (8.69)	152.98 (7.16)	98.14 (6.82)	113.29 (6.28)	119.87 (7.15)	119.89 (6.08)	127.43 (6.11)	113.84 (6.02)
17	TRANSPORTATION EQUIPMENTS .	69.00 (4.48)	72.81 (4.36)	85.62 (5.69)	96.61 (5.74)	94.98 (5.76)	71.40 (3.72)	75.60 (3.54)	60.36 (4.20)	69.91 (3.88)	75.35 (4.50)	91.09 (4.62)	82.09 (3.94)	90.93 (4.81)
01	LIVESTOEK ANIMAL PRODUCTS .	50.05 (3.25)	62.54 (3.75)	40.33 (2.68)	58.55 (3.48)	41.28 (2.50)	56.52 (2.94)	100.06 (4.68)	63.86 (4.44)	83.76 (4.64)	69.57 (4.15)	81.25 (4.12)	69.41 (3.33)	83.19 (4.40)
07	RATINGATES AND ARTIFICIAL PLASTICS ,CELLULOUSE CITRATE	65.75 (4.27)	69.95 (4.19)	65.49 (4.35)	74.49 (4.42)	60.14 (3.64)	71.97 (3.74)	86.14 (4.03)	70.88 (4.93)	75.17 (4.17)	82.27 (4.91)	79.06 (4.01)	102.35 (4.91)	82.33 (4.35)

Imports Classified by Commodity Groups

Value in M.\$

Group Code	Group Name	FEB. 2006	MAR. 2006	APR. 2006	MAY 2006	JUN. 2006	JUL. 2006	AUG. 2006	SEP. 2006	OCT. 2006	NOV. 2006	DEC. 2006	JAN. 2007	FEB. 2007
09	WOOD, WOOD COOL, WOODEN MANUFACTURES, CARK AND CARK MANUFACTURES .	55.52 (3.60)	48.00 (2.87)	44.76 (2.97)	61.78 (3.67)	71.03 (4.30)	68.84 (3.58)	68.09 (3.19)	40.93 (2.85)	48.43 (2.69)	66.31 (3.96)	52.02 (2.64)	51.01 (2.45)	65.30 (3.45)
10	MATERIALS USED IN PAPER INDUSTRY, CARTON, CARTON MANUFACTURES .	29.50 (1.92)	44.66 (2.67)	27.79 (1.85)	31.30 (1.86)	32.24 (1.95)	27.50 (1.43)	28.67 (1.34)	29.36 (2.04)	31.17 (1.73)	39.18 (2.34)	40.92 (2.08)	39.76 (1.91)	52.65 (2.78)
04	FOOD MANUFACTURING PRODUCTS, BEVERAGES, ALCOHOLS AND VENEGAR .	41.49 (2.69)	40.33 (2.41)	40.49 (2.69)	53.83 (3.20)	39.89 (2.42)	97.45 (5.07)	67.15 (3.14)	26.70 (1.86)	81.17 (4.50)	92.32 (5.51)	62.30 (3.16)	86.17 (4.13)	46.68 (2.47)
11	TEXTILES, AND TEXTILE MANUFACTURES .	41.36 (2.69)	52.12 (3.12)	37.37 (2.48)	43.38 (2.58)	41.47 (2.51)	43.75 (2.28)	42.03 (1.97)	36.24 (2.52)	57.99 (3.22)	39.45 (2.35)	50.78 (2.58)	46.29 (2.22)	44.59 (2.36)
03	FATS, GREASE, OILS (ANIMAL & VEG ETABLE) DISSALVENTS, PREPARED EDIBLE GREASEWA	41.40 (2.69)	32.72 (1.96)	30.57 (2.03)	43.29 (2.57)	34.53 (2.09)	13.55 (0.70)	52.79 (2.47)	22.69 (1.58)	50.62 (2.81)	49.08 (2.93)	65.17 (3.31)	45.01 (2.16)	24.15 (1.28)
18	ARTICLES AND APPLIANCES FOR OPTIANCES FOR OPTICS, PHOTOGRAPHY, CINEMA	21.55 (1.40)	18.98 (1.14)	20.72 (1.38)	21.96 (1.30)	20.68 (1.25)	24.56 (1.28)	24.15 (1.13)	14.76 (1.03)	19.80 (1.10)	21.25 (1.27)	22.49 (1.14)	19.63 (0.94)	21.34 (1.13)
13	INDUSTRIES MADE OF STONE OR GYPSUM OR CEMENT OR ROCK SILK .	8.24 (0.54)	12.25 (0.73)	11.93 (0.79)	13.76 (0.82)	14.94 (0.91)	15.73 (0.82)	23.56 (1.10)	10.31 (0.72)	11.20 (0.62)	12.18 (0.73)	15.00 (0.76)	19.05 (0.91)	14.83 (0.78)
20	OTHER MANUFACTURED CATEGORIES NOT MENTIONED OR LISTED BEFORE .	8.37 (0.54)	7.90 (0.47)	8.08 (0.54)	9.84 (0.58)	9.30 (0.56)	10.42 (0.54)	10.29 (0.48)	10.99 (0.76)	11.36 (0.63)	9.67 (0.58)	14.07 (0.71)	15.04 (0.72)	10.75 (0.57)

Sorting is according to values of FEB. 2007

Source : C.A.P.M.A.S

Imports Classified by Commodity Groups

Value in M.\$

Group Code	Group Name	FEB. 2006	MAR. 2006	APR. 2006	MAY 2006	JUN. 2006	JUL. 2006	AUG. 2006	SEP. 2006	OCT. 2006	NOV. 2006	DEC. 2006	JAN. 2007	FEB. 2007
08	MANUFACTURED LEATHER AND FUR .	1.27 (0.08)	0.46 (0.03)	0.80 (0.05)	1.36 (0.08)	1.23 (0.07)	1.35 (0.07)	1.55 (0.07)	0.99 (0.07)	1.02 (0.06)	0.99 (0.06)	1.70 (0.09)	0.72 (0.03)	3.06 (0.16)
12	SHOES,HEAD DRESSES,UMBRELLAS,WHIPS AND THEIR PARTS .	2.67 (0.17)	1.01 (0.06)	1.64 (0.11)	2.69 (0.16)	2.20 (0.13)	2.66 (0.14)	1.32 (0.06)	1.63 (0.11)	3.36 (0.19)	2.05 (0.12)	5.89 (0.30)	1.61 (0.08)	1.38 (0.07)
19	WEAPONS AND ANMUNATIONS AND THEIR PARTS .	0.00 (0.00)	0.07 (0.00)	0.00 (0.00)	0.00 (0.00)	0.01 (0.00)	0.08 (0.00)	0.06 (0.00)	0.07 (0.00)	0.08 (0.00)	0.12 (0.01)	0.11 (0.01)	0.66 (0.03)	0.21 (0.01)
14	PEARL,PRECIOUS AND SEMI-PRECIOUS STONES,PRECIOUS METALS AND ORDINARY	0.21 (0.01)	0.08 (0.00)	0.16 (0.01)	0.16 (0.01)	0.29 (0.02)	0.27 (0.01)	0.21 (0.01)	0.16 (0.01)	0.22 (0.01)	0.12 (0.01)	24.92 (1.26)	1.32 (0.06)	0.11 (0.01)
Total Imports		1540.13	1670.0	1505.9	1683.6	1650.1	1921.9	2137.6	1438.5	1803.2	1676.02	1970.4	2085.3	1891.3

Sorting is according to values of FEB. 2007

Source : C.A.P.M.A.S

Imports Classified by degree of Usage

Value in M.\$

CODE	TITLE	FEB. 2006	MAR. 2006	APR. 2006	MAY 2006	JUN. 2006	JUL. 2006	AUG. 2006	SEP. 2006	OCT. 2006	NOV. 2006	DEC. 2006	JAN. 2007	FEB. 2007
04	Intermediate Goods	523.70	588.09	548.66	598.21	590.68	721.35	708.33	456.71	592.56	640.11	706.30	766.62	694.13
		(34.00)	(35.21)	(36.43)	(35.53)	(35.80)	(37.53)	(33.14)	(31.75)	(32.86)	(38.19)	(35.85)	(36.76)	(36.70)
7207190000	OTH.SEMI-FINISH PROD.OF IRON NON-ALLOY<0.25% CR.	29.81	41.48	54.07	47.52	55.03	52.09	40.81	8.18	31.65	22.97	64.59	72.63	67.40
4407100000	CANIFEROUS WOOD,SAWN LENGHTWISE OF THICK.>6MM	37.62	28.28	32.95	43.82	51.66	51.50	47.16	32.03	30.56	51.82	31.17	28.25	45.69
7204490000	FERROUS WASTE & SCRAP OTHER	5.05	13.22	18.07	26.35	8.46	36.93	54.48	22.67	41.97	14.60	22.90	55.34	25.60
8708999900	OTH. PARTS FOR MOTOR VEHL.	11.17	13.82	14.10	18.96	20.37	14.84	16.11	9.79	14.69	11.67	17.58	19.66	22.35
2818200000	OXIDE OF ALUMINIUM,OTHERS	0.00	23.95	0.05	12.73	0.05	27.68	23.60	0.13	12.80	0.30	0.00	0.11	0.02
8473300000	PARTS & ACCESS. FOR AUTOMATIC DATA PROCESS. MCH	17.35	10.15	12.72	11.81	10.54	14.10	12.87	11.23	9.86	15.29	18.99	17.03	12.17
2403991000	TOBACCO,CUT OR PRESSED FOR CHEWING	0.00	0.00	0.00	11.04	0.00	9.72	0.00	0.00	12.92	10.86	0.04	11.12	0.00
7306909000	TUBES WELD.OF NON CIRCL.CROSS SECT.OF IRON <12MM.	2.18	2.90	3.85	8.24	8.79	2.35	4.91	3.62	3.09	4.05	7.37	5.95	11.45
	OTHERS	420.52	454.30	412.85	417.74	435.78	512.13	508.38	369.06	435.02	508.56	543.66	556.54	509.5
02	Raw materials	255.10	265.33	239.14	240.57	241.23	277.28	291.37	244.50	274.85	252.33	285.90	358.94	278.69
		(16.56)	(15.89)	(15.88)	(14.29)	(14.62)	(14.43)	(13.63)	(17.00)	(15.24)	(15.06)	(14.51)	(17.21)	(14.74)
2709000010	PETROLEUM, CRUDE	82.05	81.52	90.05	87.37	82.40	98.17	101.05	96.38	79.67	79.61	81.95	70.21	80.98
1001100000	DRUM WHEAT	87.80	94.50	81.68	71.17	27.95	72.79	90.75	75.93	77.00	84.97	95.79	133.28	80.45
1005900010	CORN	23.84	33.14	16.57	34.68	93.87	47.65	40.02	51.14	63.41	43.11	37.62	57.32	53.71
1201000000	BEANS,SOYA,BROKEN OR NOT	14.60	11.04	12.10	17.94	18.64	17.79	16.61	15.37	12.44	13.09	1.35	53.42	11.66
2401109000	LEAF,TOBACO NOT STEMMED STRIPPED	16.70	16.04	16.69	13.60	10.47	12.82	18.95	0.58	17.05	18.76	10.36	24.84	7.27
1207400000	SEEDS,SEMSAME	0.38	1.13	0.75	3.33	2.54	0.08	0.46	0.72	0.90	0.27	1.69	1.04	0.37
5201000091	RAW COTTON MIXED NOT CARDED OR COMBED	0.00	0.00	0.67	3.30	0.00	0.64	0.64	0.00	0.00	0.00	0.00	0.00	0.00
2503100000	SULPHUR, CRUDE OR UNREFINED	0.00	0.00	0.20	2.27	0.00	0.00	0.17	0.00	0.39	0.14	0.00	0.00	0.62
	OTHERS	29.74	27.95	20.42	6.91	5.36	27.33	22.72	4.38	23.99	12.39	57.14	18.84	43.63

Imports Classified by degree of Usage

Value in M.\$

CODE	TITLE	FEB. 2006	MAR. 2006	APR. 2006	MAY 2006	JUN. 2006	JUL. 2006	AUG. 2006	SEP. 2006	OCT. 2006	NOV. 2006	DEC. 2006	JAN. 2007	FEB. 2007
09	Free Zones	206.46	238.05	213.04	226.79	254.86	220.74	358.49	189.24	332.54	212.09	259.23	260.66	258.22
		(13.41)	(14.25)	(14.15)	(13.47)	(15.45)	(11.49)	(16.77)	(13.16)	(18.44)	(12.65)	(13.16)	(12.50)	(13.65)
08	Non-durable Goods	173.11	178.58	152.86	195.95	155.16	173.56	270.25	169.33	227.74	209.67	274.19	221.23	220.80
		(11.24)	(10.69)	(10.15)	(11.64)	(9.40)	(9.03)	(12.64)	(11.77)	(12.63)	(12.51)	(13.92)	(10.61)	(11.67)
1511909100	OIL PALM , REFINED NOT F.R.S	16.14	16.59	20.90	32.50	23.11	3.00	47.24	18.21	33.67	44.15	44.74	31.82	16.73
0202300000	MEAT,BONELSS OF BOV.,FROZEN	27.24	33.58	16.44	25.26	22.65	29.70	69.28	43.04	56.44	34.91	27.65	32.33	49.59
3004909090	MEDICAMENTS,OTHER FOR THERAPEUTIC F.R.S.	7.20	7.46	6.87	11.11	10.70	14.56	12.44	4.71	6.40	7.94	11.83	5.05	12.94
0303790000	FISH, OTHER, FROZEN	1.23	4.10	2.89	10.05	5.36	6.17	10.83	3.17	7.09	9.07	5.85	2.77	6.50
1701990020	SUGAR,REFINED OF CANE	0.07	0.00	0.31	5.47	2.48	0.00	0.00	0.00	10.15	0.00	0.00	2.58	0.00
0713500020	BROAD BEANS & HORSE BEANS NOT SOWING	11.35	8.86	8.89	5.38	7.45	3.67	1.84	1.75	8.69	3.83	13.12	7.91	6.09
0206220000	LIVERS OF BOV.,FROZEN	2.76	2.83	4.80	5.36	3.97	5.84	6.04	6.50	6.38	9.50	5.36	4.49	3.63
2304000000	OIL-CAKE & RESIDUES OF SOYA-BEAN	2.52	5.79	1.91	3.58	1.95	2.53	12.08	8.18	3.96	7.70	17.45	9.52	4.37
	OTHERS	104.61	99.38	89.86	97.25	77.49	108.09	110.50	83.77	94.96	92.57	148.18	124.76	120.9
06	Investement Goods	148.62	156.09	154.71	163.19	147.81	181.86	213.26	148.49	130.95	167.16	211.59	189.85	192.86
		(9.65)	(9.35)	(10.27)	(9.69)	(8.96)	(9.46)	(9.98)	(10.32)	(7.26)	(9.97)	(10.74)	(9.10)	(10.20)
8525200000	TRANSMISSION APPR. INCORPORATING RECEPTION APPR.	16.49	14.75	7.01	18.27	13.47	18.31	20.44	16.29	16.01	27.89	21.46	7.47	15.86
9018900090	OTHER MEDICAL OR SURGICAL INSTR. & APPL.	6.93	4.70	6.03	7.54	7.00	7.06	6.89	3.32	5.50	5.29	6.37	3.64	5.88
8481809090	OTHER ARTICLES OF TAPS ES	4.22	3.29	4.60	5.83	4.53	8.81	5.08	4.34	5.98	5.74	6.81	9.13	10.16
0713500010	BROAD BEANS & HORSE BEANS FOR SOWING	0.06	0.06	1.37	4.98	3.59	0.03	16.71	0.39	1.41	2.34	0.81	0.87	0.23
8536900000	OTH.OPP.FOR SWITHING ELEC.CIRCUITS VOLTAGE<=1000 V	2.32	1.97	2.37	4.07	3.84	3.99	2.66	1.63	3.87	2.95	4.74	2.84	2.76
8479899000	OTH.MCH.HAVING INDIVIDUAL FUNCTION	5.32	8.62	16.58	4.03	9.80	7.22	10.55	17.33	4.65	16.22	13.11	25.48	22.81
8479820000	OTH.MCH FOR MIXI.,CRUSH.,SCREEN.,HOMGENIS.	0.31	0.18	3.04	3.28	0.49	0.76	0.17	1.16	0.15	0.09	0.11	0.27	0.32

Imports Classified by degree of Usage

Value in M.\$

CODE	TITLE	FEB. 2006	MAR. 2006	APR. 2006	MAY 2006	JUN. 2006	JUL. 2006	AUG. 2006	SEP. 2006	OCT. 2006	NOV. 2006	DEC. 2006	JAN. 2007	FEB. 2007
8536509000	OTH.SWITSES.ELEC.CIRCUITS	0.79	1.44	1.34	3.19	1.85	2.07	1.41	5.60	1.08	0.76	2.56	1.23	0.97
	OTHERS	112.20	121.09	112.36	112.00	103.24	133.60	149.36	98.42	92.32	105.87	155.62	138.92	133.9
00	Fuel	178.26	190.38	135.12	190.07	185.58	286.32	239.23	177.23	190.75	159.14	147.46	233.65	178.85
		(11.57)	(11.40)	(8.97)	(11.29)	(11.25)	(14.90)	(11.19)	(12.32)	(10.58)	(9.50)	(7.48)	(11.20)	(9.46)
2710001060	GAS OIL	37.08	58.82	88.30	112.28	87.85	185.79	114.05	63.35	103.13	57.29	0.00	54.10	56.83
2711131000	PUTANES FOR F.R.S.,LIQUEFIED	141.11	94.24	43.84	60.19	67.46	53.72	91.34	94.83	87.46	82.09	106.56	130.02	121.98
2710001030	FUEL,BENZINE TYPE JET FUEL	0.00	31.37	0.00	16.73	27.25	46.55	23.94	16.03	0.00	11.32	40.10	0.00	0.00
2701190000	COAL,OTHER,PULVERISED OR NOT,NOT AGGLD.	0.00	0.00	2.90	0.61	0.00	0.00	0.00	0.00	0.00	0.00	0.00	40.19	0.00
2701110000	COAL,ANTHRACITE PULVRD. OR NOT,NOT AGGLD.	0.00	0.04	0.00	0.16	0.00	0.03	0.00	0.00	0.00	0.00	0.79	0.40	0.00
2703000010	PEAT,WHETHER OR NOT AGGLD.	0.07	0.04	0.07	0.05	0.09	0.09	0.07	0.07	0.04	0.03	0.01	0.11	0.04
2703000020	LIHER, PEAT	0.01	0.00	0.01	0.04	0.03	0.00	0.09	0.07	0.00	0.02	0.01	0.06	0.00
0000082655		0.00	0.00	0.00	0.00	0.00	0.00	0.00	0.00	0.00	0.00	0.00	0.00	0.00
	OTHERS	0.00	5.87	0.00	0.00	2.90	0.14	9.74	2.88	0.12	8.40	0.00	8.76	0.00
07	Durable Goods	54.88	53.50	62.39	68.86	74.72	60.77	56.62	53.01	53.82	35.52	85.71	54.39	67.77
		(3.56)	(3.20)	(4.14)	(4.09)	(4.53)	(3.16)	(2.65)	(3.69)	(2.98)	(2.12)	(4.35)	(2.61)	(3.58)
8703232000	VEHICL.SPARK PISTON ENGINE<1600:2000>4CYL.	2.55	1.75	2.73	17.71	4.89	4.34	3.71	0.20	1.75	0.44	1.67	0.65	3.99
8703210020	VEHICL.PISTON ENGINE SPARK <=1000 4 CYL.	4.94	5.91	13.24	5.31	7.76	1.90	5.78	7.02	6.51	3.03	5.19	10.71	10.97
8703221000	VEHICL.PISTON ENGING SPARK>1000:1300CC>4 CYL	1.25	1.83	2.32	5.06	3.92	3.00	0.91	1.33	2.46	1.77	0.93	5.96	3.82
8703239000	VEHICL.SPARK,PISTON ENGINE <2000-3000 CM3,8CYL.	1.90	5.79	6.48	4.66	7.81	1.97	5.82	7.93	11.10	4.37	14.14	1.15	11.05
8703229000	VEHICL.PISTON ENGINE SPARK >1300:1500 CC 4CYL	1.91	4.35	1.07	4.40	7.78	3.22	2.40	0.41	1.23	0.30	5.15	1.13	1.15
8703231000	VEHICL.PISTON ENGINE SPARK <1500:1600CC >4CYL.	6.61	2.27	5.93	1.92	2.68	1.44	2.46	8.08	0.51	1.51	1.19	2.31	2.05
Total Imports		1540.13	1670.0	1505.9	1683.6	1650.1	1921.9	2137.6	1438.5	1803.2	1676.02	1970.4	2085.3	1891.3

Sorting is according to values of FEB. 2007

Source : C.A.P.M.A.S

Imports Classified by degree of Usage

Value in M.\$

CODE	TITLE	FEB. 2006	MAR. 2006	APR. 2006	MAY 2006	JUN. 2006	JUL. 2006	AUG. 2006	SEP. 2006	OCT. 2006	NOV. 2006	DEC. 2006	JAN. 2007	FEB. 2007
6902200000	BRICKS & BLOCKS CONT >50% AL. OR SI. MIXT.	0.07	0.66	0.88	1.68	0.82	1.09	0.78	0.82	0.53	0.82	0.23	0.43	0.99
6902100000	BRICKS & BLOCKS CONT >50% MA.OR	0.61	1.89	1.52	1.65	3.25	1.27	2.46	1.26	2.07	2.05	2.15	3.73	1.68
	OTHERS	35.05	29.05	28.23	26.45	35.80	42.54	32.30	25.96	27.65	21.23	55.06	28.31	32.08
Total Imports		1540.13	1670.0	1505.9	1683.6	1650.1	1921.9	2137.6	1438.5	1803.2	1676.02	1970.4	2085.3	1891.3

Sorting is according to values of FEB. 2007

Source : C.A.P.M.A.S

**Table (2-6) Commodity Exports by Geographical Distribution
Through January – February 2006, 2007**

Million US\$

Items	Jan – Feb 2006	Jan – Feb 2007	
		Value	%
INVESTMENT AUTHORITY	261	527	21%
INDIA	194	258	10%
ITALY	234	209	8%
SPAIN	255	192	8%
FOREIGN SHIPS SUPPLY	138	149	6%
U.S.A	130	130	5%
SOUTH KORIA	58	130	5%
TURKEY	48	89	4%
SAUDI-ARABIA	55	71	3%
JORDAN	26	60	2%
UNITED KINGDOM	90	59	2%
LEBANON	51	56	2%
FRANCE	111	55	2%
JAPAN	40	42	2%
Other	506	476	19%
Total	2197	2500	100%

Source: CAPMAS – Data is treated and classified by EITP

**Table (2-6) Commodity Imports by Geographical Distribution
Through January – February 2006, 2007**

Million US\$

Items	Jan – Feb 2006	Jan – Feb 2007	
		Value	%
INVESTMENT AUTHORITY	422	519	13%
U.S.A	248	469	12%
SAUDI-ARABIA	92	325	8%
FEDERAL REP.OF GERMANY	168	255	6%
CHINA PEOPLE'S REPUBLIC	169	239	6%
RUSSIAN FEDERATION	94	189	5%
KUWAIT	172	162	4%
ITALY	123	155	4%
BRAZIL	65	151	4%
FRANCE	86	111	3%
REPUBLIC OF UKRANIA	81	105	3%
JAPAN	120	99	3%
ERROUP ECONOMIC COMMUNITY	80	82	2%
INDIA	97	74	2%
Other	1138	1042	26%
Total	3157	3977	100%

Source: CAPMAS – Data is treated and classified by EITP